



RIPE NCC

RIPE NETWORK COORDINATION CENTRE

RIPE NCC Tools Update

Viktor Naumov
Senior Software Engineer
RIPE NCC

Viktor Naumov | 4 June | ENOG 16

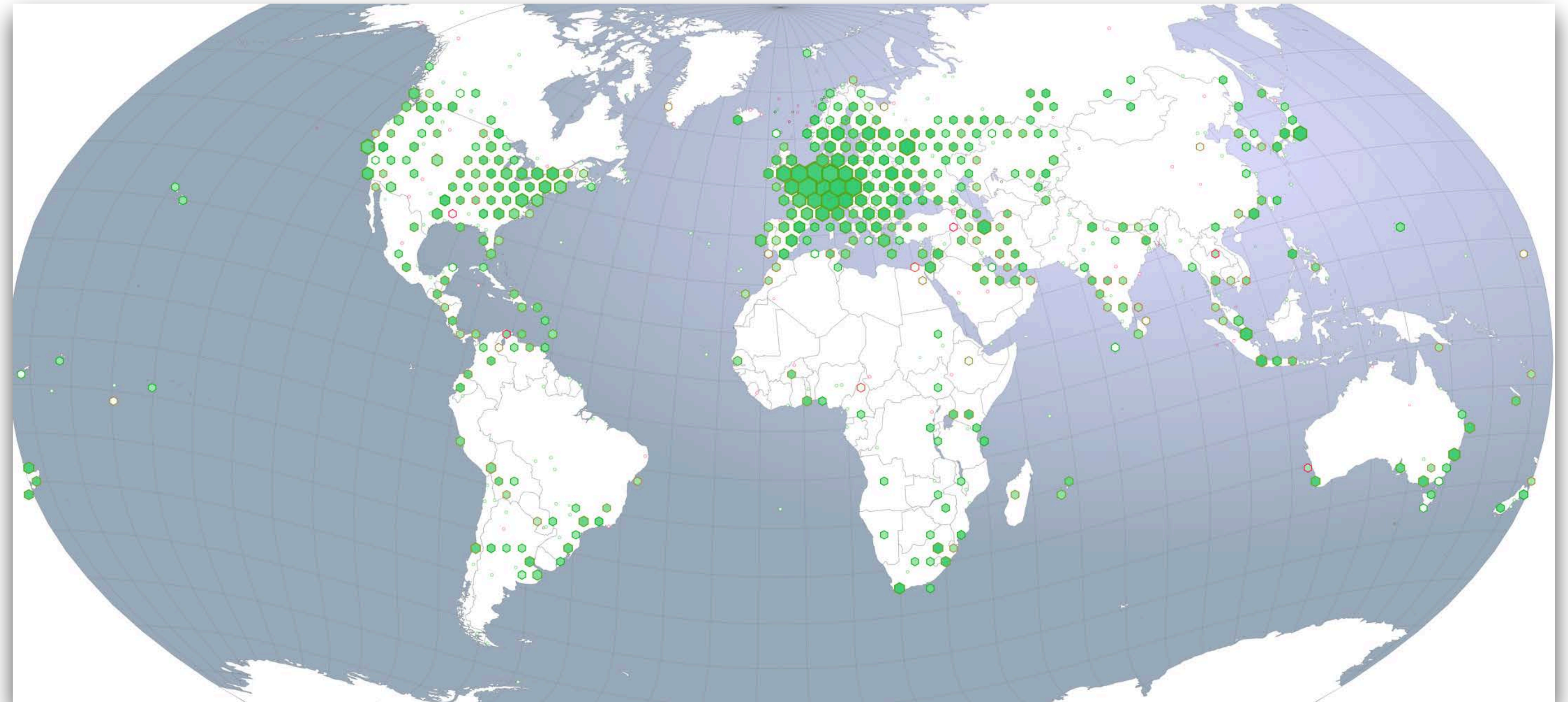


RIPE Atlas

RIPE Atlas



- 10513 probes
 - 12 in Georgia
- 460 anchors
 - 1 in Georgia



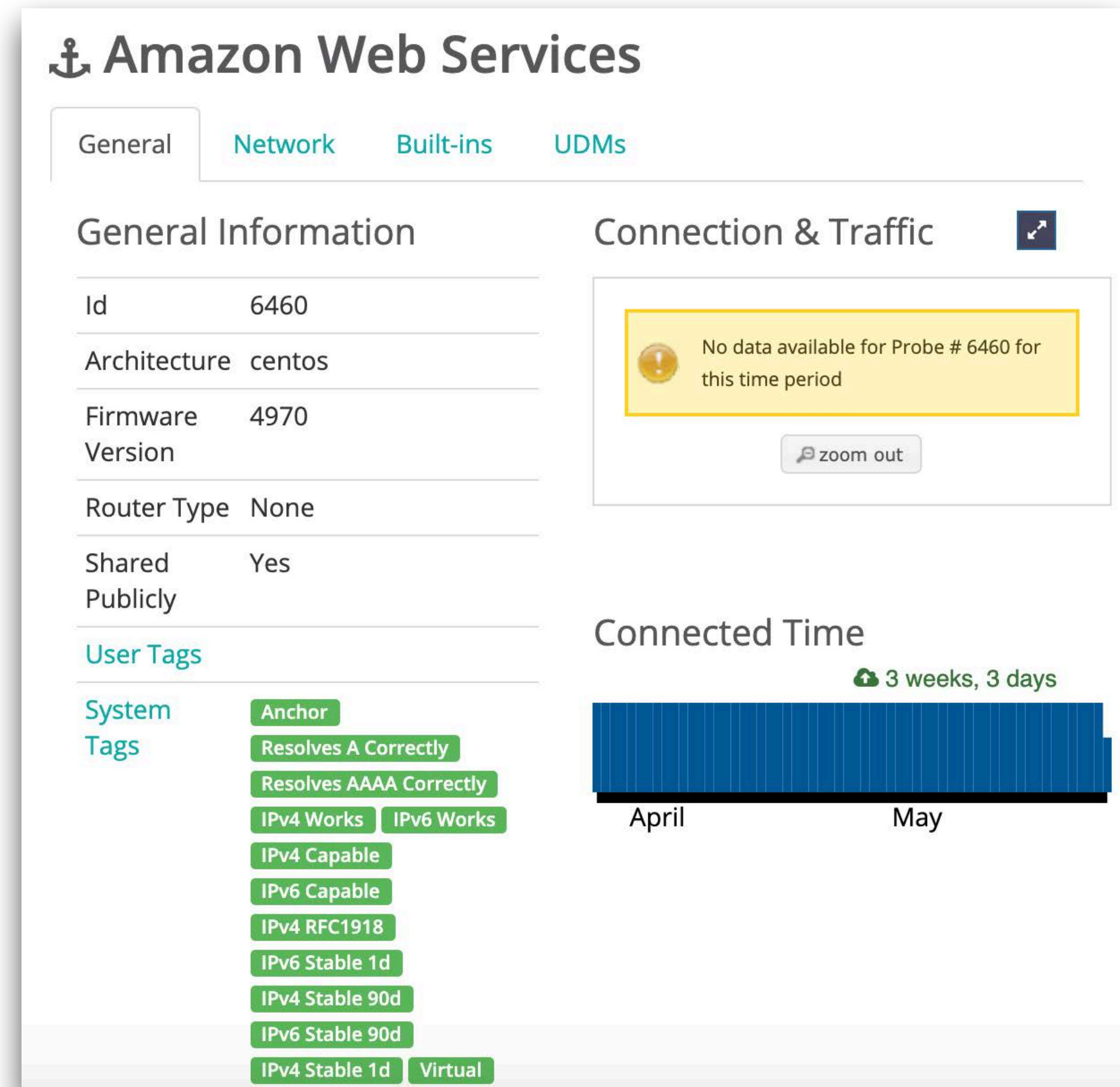
We are looking for sponsors for RIPE Atlas!

atlas.ripe.net/get-involved/become-a-sponsor/

RIPE Atlas VM Anchors



- 94 of 457 anchors are VMs
- Cloud VMs: Amazon connected, Google upcoming
- Apply:
<https://atlas.ripe.net/get-involved/become-an-anchor-host/>
- Learn more about RIPE Atlas VM anchors:
https://labs.ripe.net/Members/alun_davies/announcing-ripe-atlas-vm-anchors



Measurement UI Revamp



- 100% API-backed
- API performance and functionality improvements enabled soon

Settings & Status	Latest Results	Map	Latencymon	Downloads
Overview	recurring IPv4 Ping "Ping measurement to silo.plainsp..." id 18959281			▼
Target	silo.plainspace.com			▼
Ping Specific Settings	PACKETS: 3, SIZE: 48			▼
Status & Timing	ONGOING from 2019-01-15T12:53:11Z every 240s			▼
Probes	10 Requested / 10 Actually Participating			▼
Tags & Projects				
Ownership & Costs	Public			▼

labs.ripe.net/Members/jasper_den_hertog/new-design-and-functionality-for-the-ripe-atlas-measurement-detail-page

Software Probes



- Beta testing over the summer
- Preparing the infrastructure
- Security review
- **Can you help us package?**
- Are you interested in deploying?
- Fill in the survey!
 - <https://www.ripe.net/participate/forms/apply/atlas-probes/>

Also...

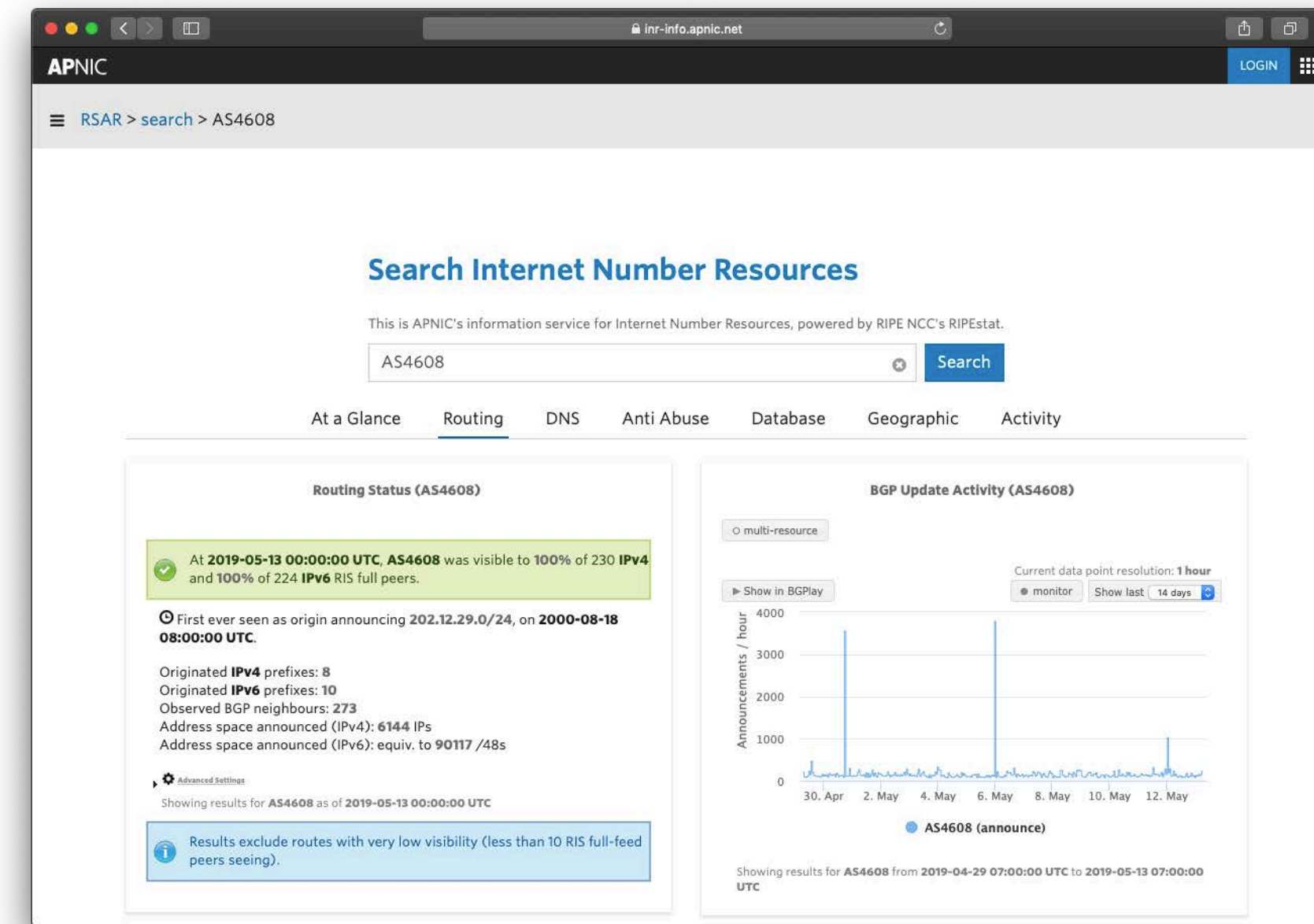
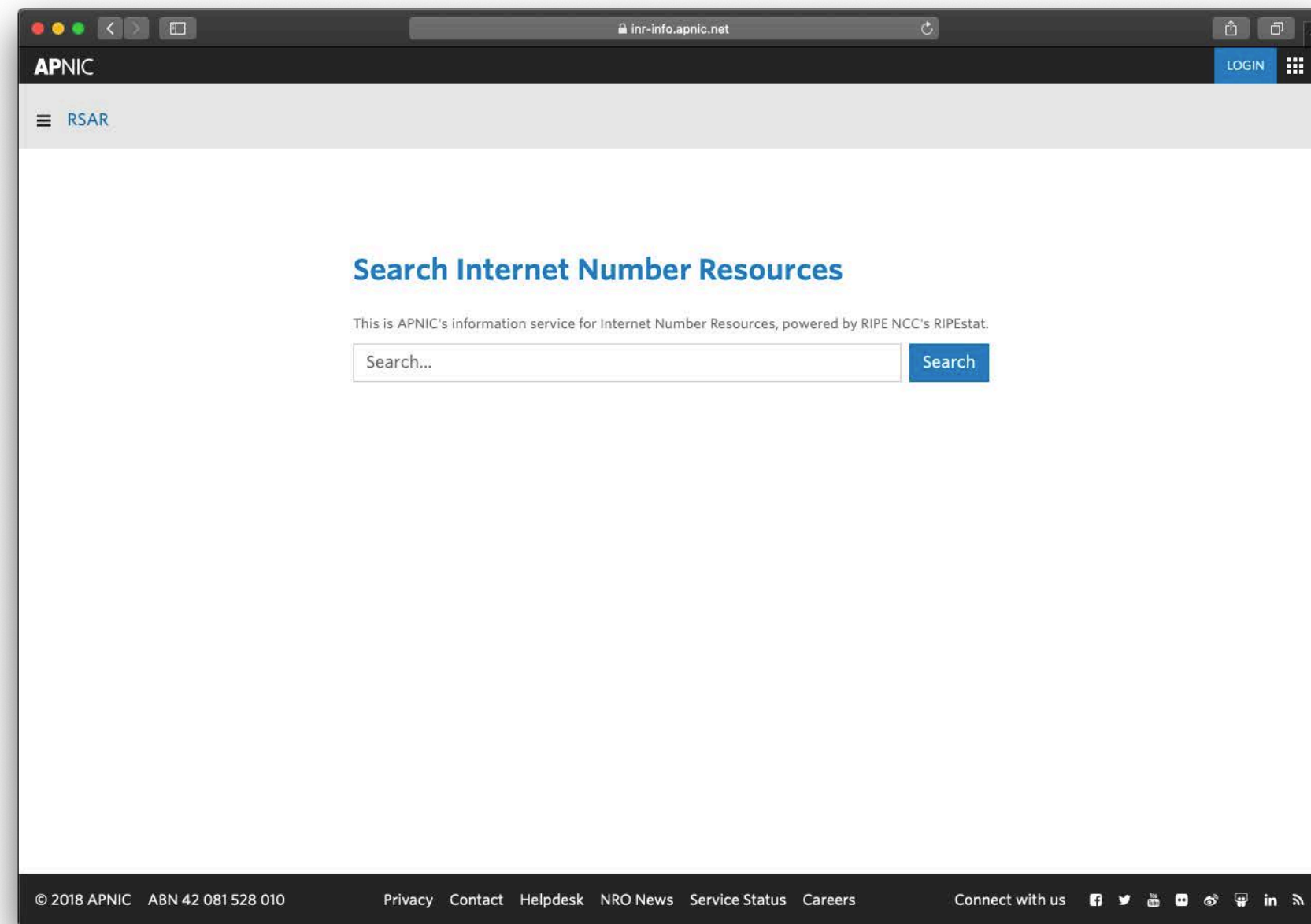


- DNS cookie support (API-only)
- Version 4 probe stock low, more coming soon
- Concluding most recent independent security review
- Working on RIPE Atlas data in the cloud, Google BigQuery
- Working on CDN support



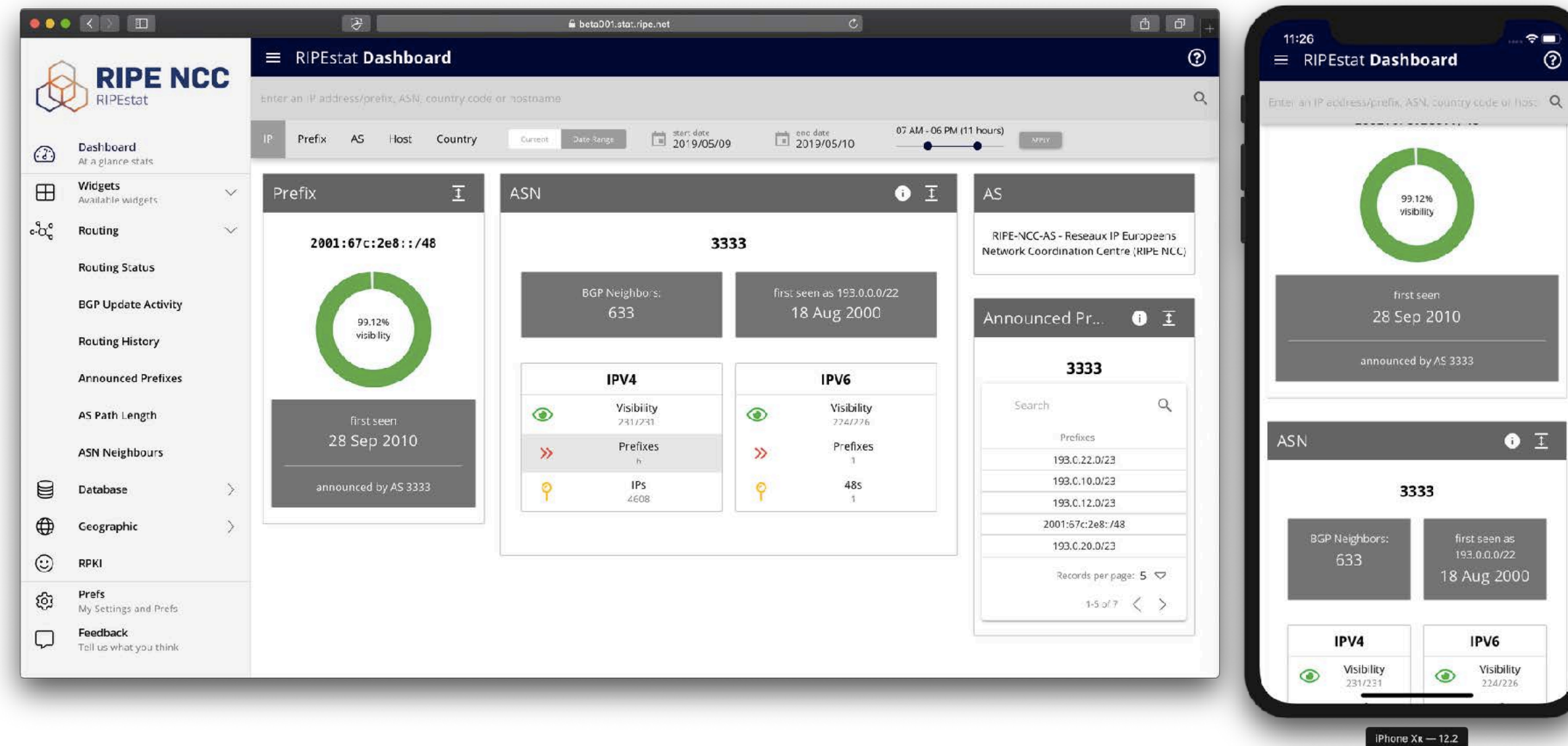
RIPEstat

RIPEstat - RIR Cooperation



- Developed **APNIC NetOX** powered by RIPEstat
 - <https://netox.apnic.net>
- More collaborative projects with other RIRs will follow

RIPEstat - UI Concept

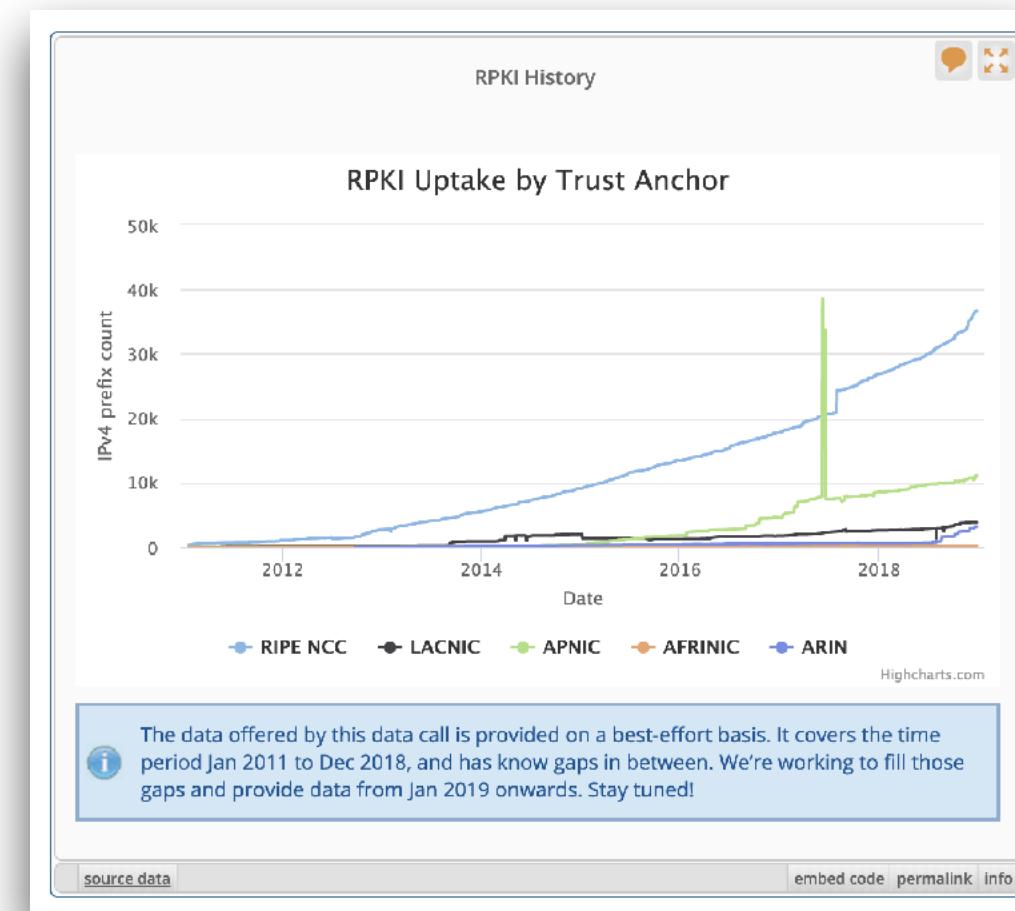


- Started to work on a new UI concept for RIPEstat
 - https://labs.ripe.net/Members/stephen_suess_1/ripestat-next-generation-ui

RIPEstat - New Features



- RPKI focus:
 - RPKI Validation support and integration in RIPEstat
 - RPKI History support



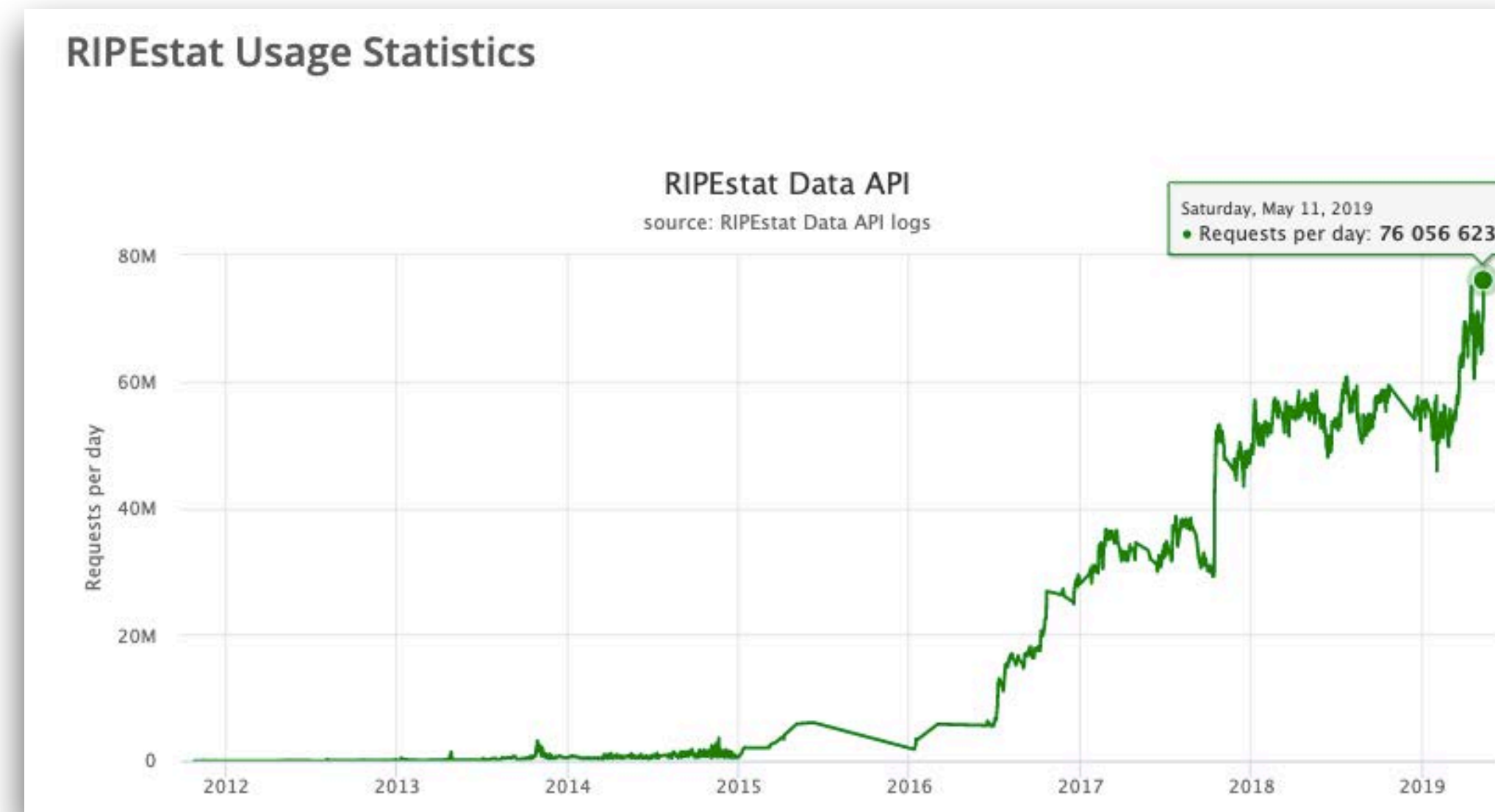
At 2019-05-13 08:00:00 UTC, 2001:67c:2e8::/48 was 99% visible (by 222 of 224 RIS full peers).

First ever seen announced by AS3333, on 2010-09-28 16:00:00 UTC.

Originated by:
AS3333 - RPKI Status: 😊 - Route object: RIPE

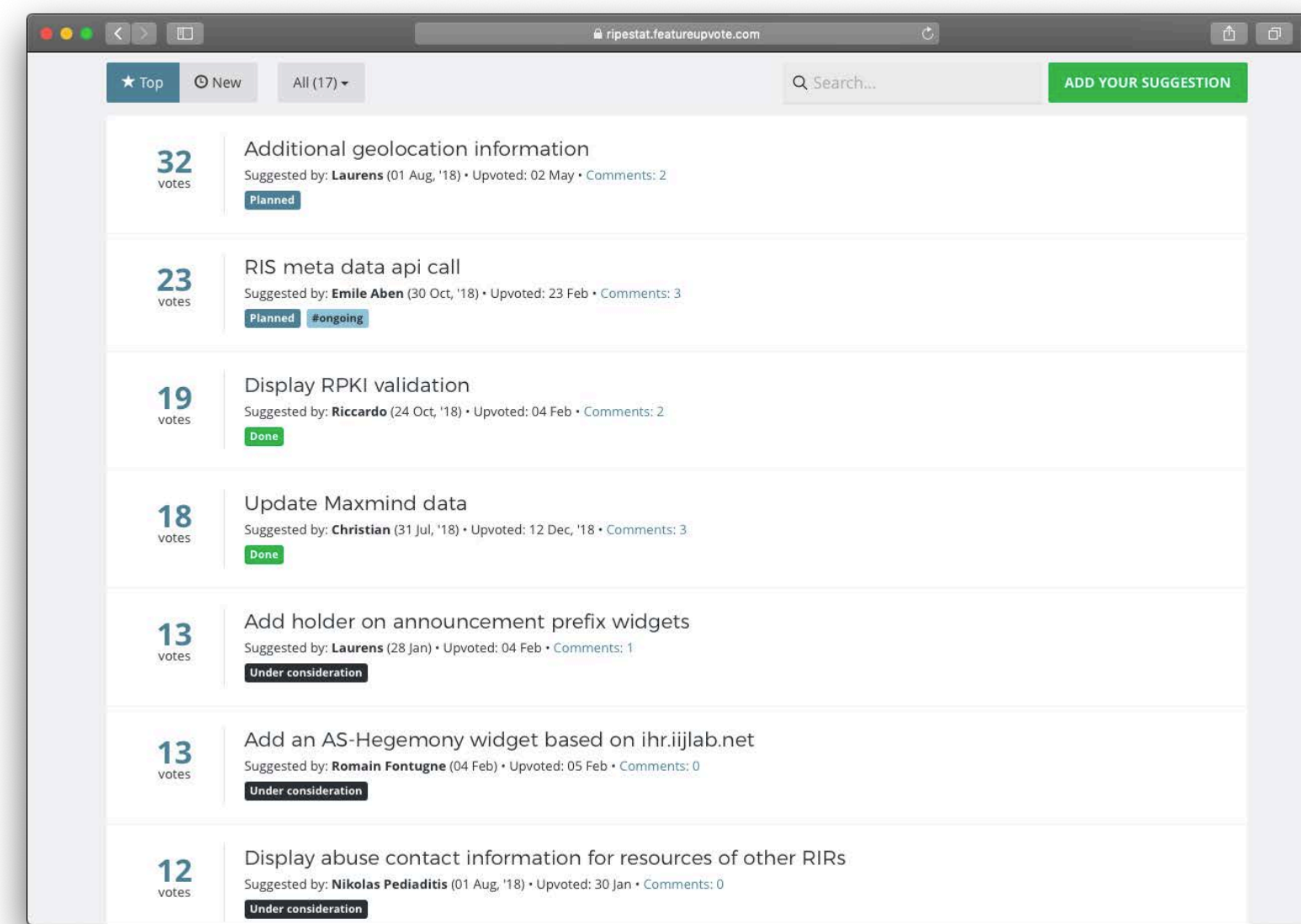
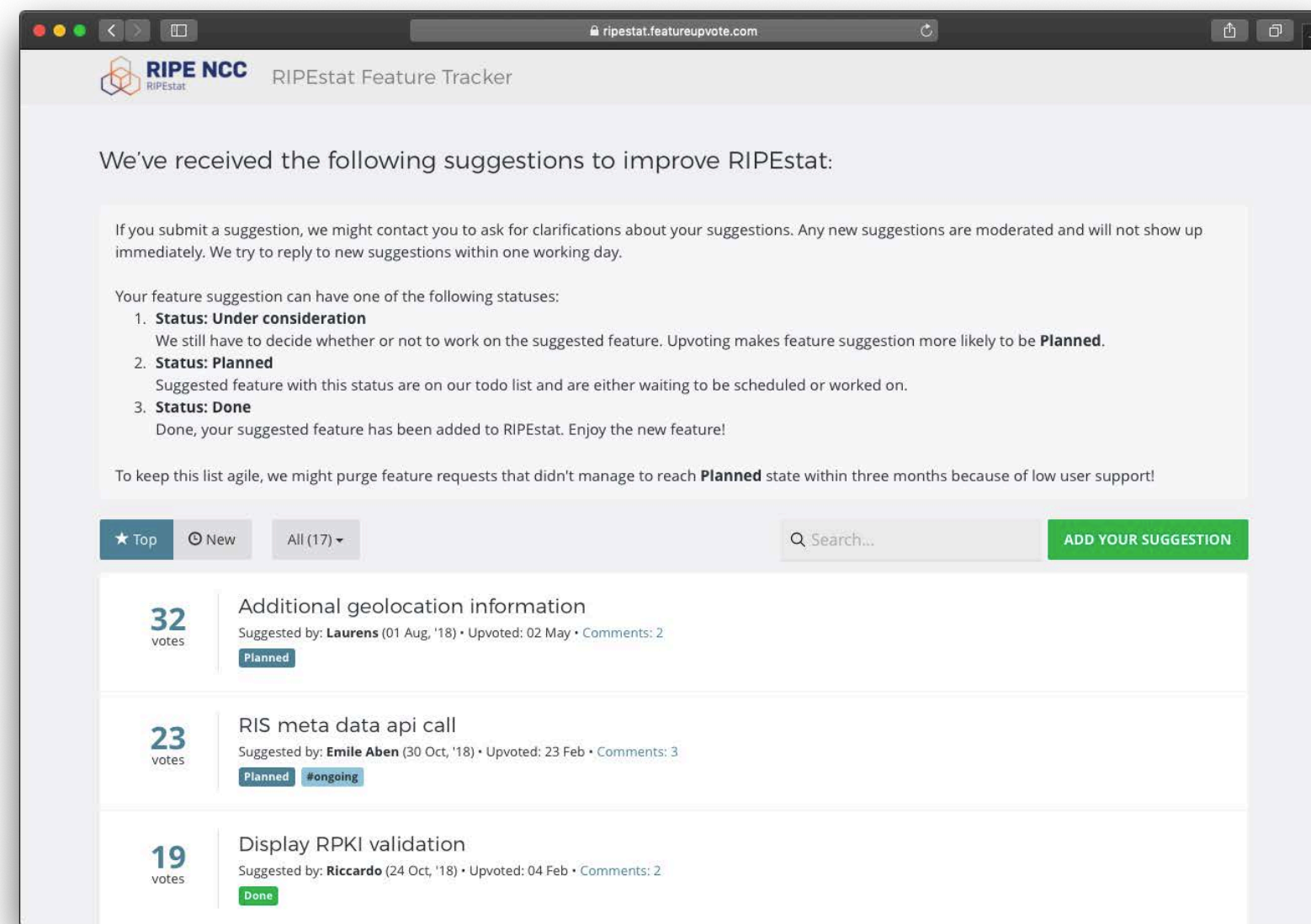
- To see other new features follow us on Twitter: **@NCC_RIPEstat**

RIPEstat - Operation



- Solved scalability issues on API level
- >70M daily requests now possible

RIPEstat - Community



- Very positive feedback on public feature tracker
 - <https://ripestat.featureupvote.com>



Other Projects

RIS Live Trial



- <https://ris-live.ripe.net/>
- <1s latency end to end
- JSON format
- WebSocket/HTTP stream
- Fill in the survey! (Do you like it? Will you use it? How?)
- We will decide whether to continue service end of Q3, based on your feedback

Live RIS BGP messages



/ Received at 14:05:05 (0.25 second delay)

```
{
  "timestamp": 1550235905.09,
  "peer": "91.206.52.130",
  "peer_asn": "58299",
  "id": "91.206.52.130-1550235905.09-3854212",
  "host": "rrc20",
  "type": "UPDATE",
  "path": [58299, 6939, 2914, 12859, 12654],
  "community": [[58299, 1100]],
  "origin": "igp",
  "announcements": [
    {
      "next_hop": "2001:7f8:24::82",
      "prefixes": [
        "2001:7fb:ff02::/48"
      ]
    },
    {
      "next_hop": "fe80::4e5e:cff:fe25:40c4",
      "prefixes": [
        "2001:7fb:ff02::/48"
      ]
    }
  ]
}
```


How We Help Research



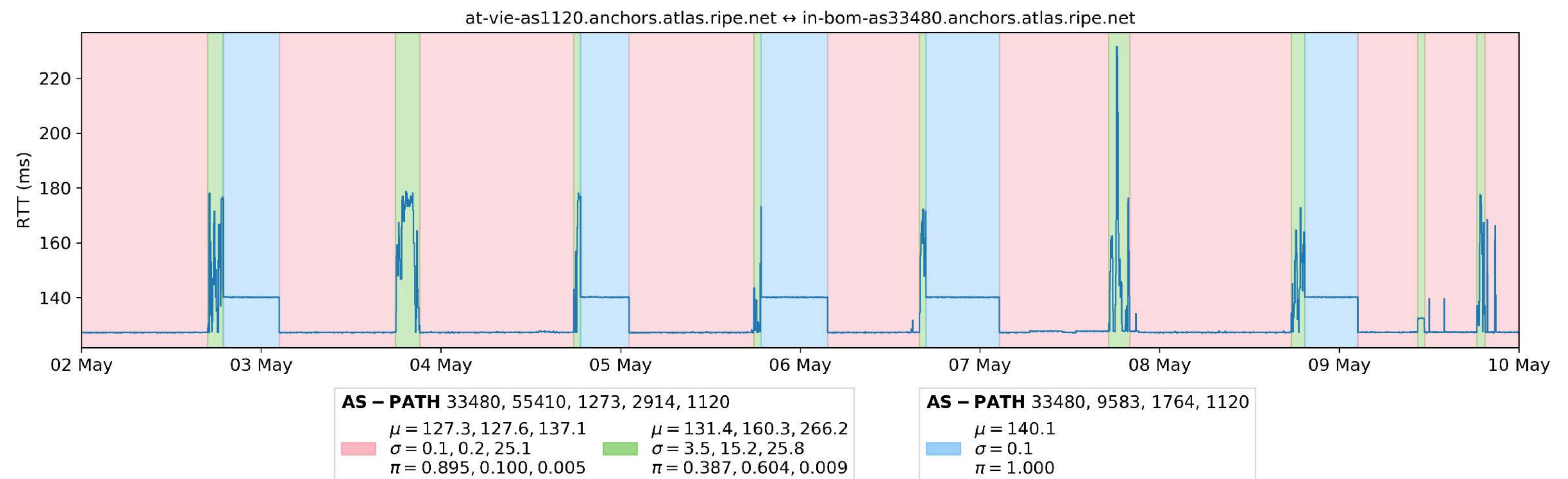
- In depth knowledge about data we collect
 - Learn how to reduce “time to insight” from our data

- Custom Analysis

- <https://labs.ripe.net>

- Collaborate!

- Internships
 - How can we make our data collection systems better?



https://labs.ripe.net/Members/maxime_mouchet/api-for-summarising-events-in-ripe-atlas-rtt-time-series



Questions



vnaumov@ripe.net

atlas@ripe.net

stat@ripe.net

@RIPE_Atlas

@NCC_RIPEstat