



RIPE NCC
RIPE NETWORK COORDINATION CENTRE

RIPE NCC Update

Axel Pawlik
Managing Director
RIPE NCC

ENOG 11 | Moscow | 8 June 2016

About the RIPE NCC



- Secretariat for the RIPE community
- Maintains the RIPE Database
- One of five Regional Internet Registries (RIRs)
 - Serving Europe, the Middle East and parts of Central Asia
 - 76 countries
- Allocate and assign IPv4, IPv6 and AS Numbers
- Outreach, tools, measurements, training and more!

About the RIPE NCC



- Independent, not-for-profit, bottom-up membership organisation
- Anyone can become a member
- Incorporated into the Netherlands, governed by Dutch law
- Funded by members, fully autonomous
- Open, transparent, neutral and impartial
- Offices in Amsterdam and Dubai (apx. 140 ppl)
 - Two staff members work from Moscow

Focus in 2016



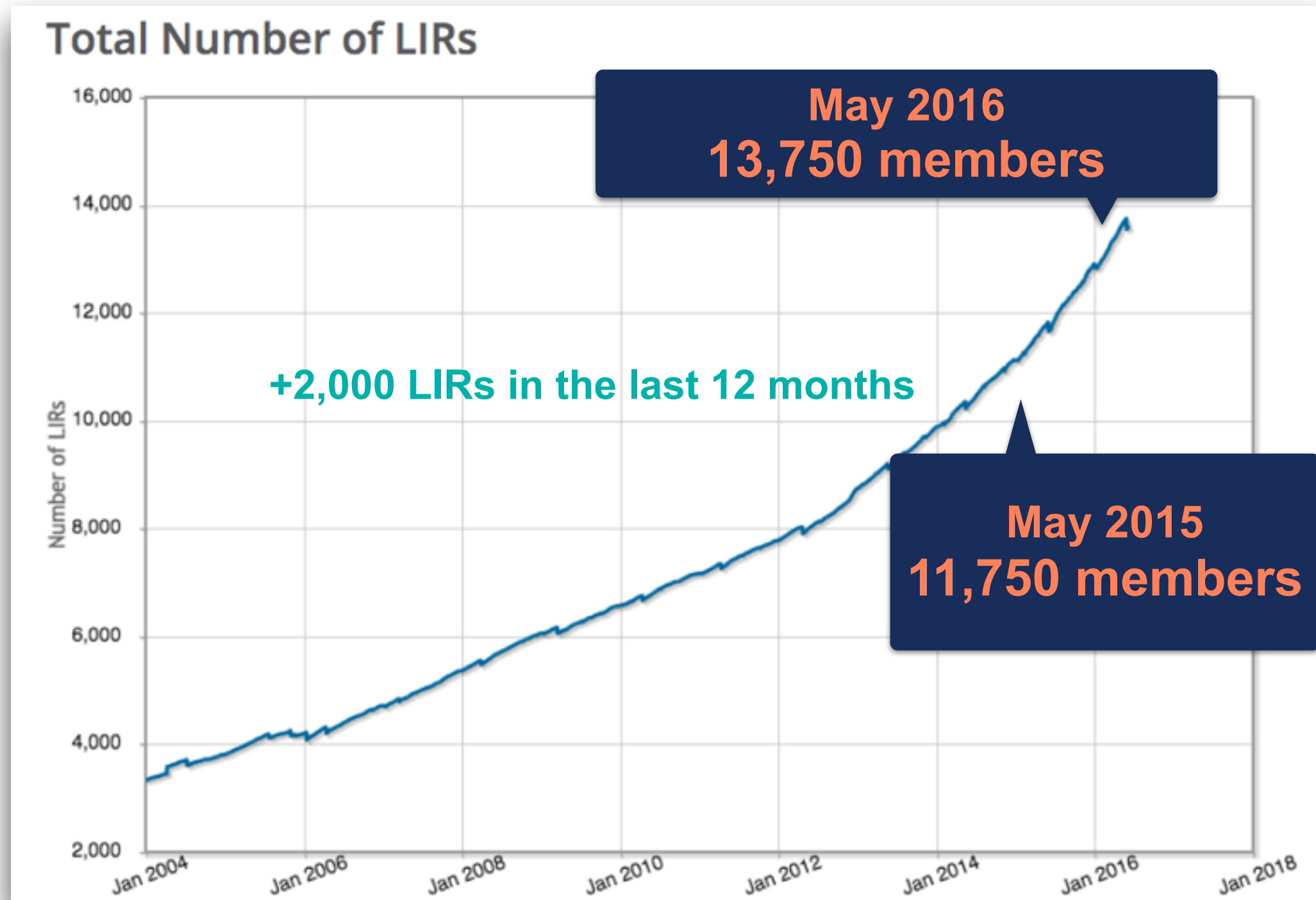
- Maintain a strong registry
- Effective outreach and external relations throughout our service region
 - Regional meetings, member lunches, trainings, etc.
 - Improve our entire service offering
 - Improve our processes for greater efficiency
- Focus on collecting and acting on member feedback
- Providing enhanced statistics and analysis

Further Focus in 2016



- RIPE NCC Survey 2016
- RIPE Atlas
- Expanding K-root
 - 39 K-root nodes in over 25 countries
- Moving to our new office in Amsterdam

Growing Membership



Understanding our Membership



- A changing RIPE NCC membership reflects a change in the overall Internet environment
 - Analysis reveals that close to half of our current membership base are no longer classic ISPs/telcos
- We need to better understand these categories and the associated growth trends
- Does our current service portfolio cater to the needs of an evolving membership?
 - We are looking at this in more detail

RIPE NCC General Meeting May 2016

- Record number of registrations
 - Record 1,191 vote registrations (125 from ENOG region)
- RIPE NCC Executive Board elections
 - Nigel Titley and Remco van Mook re-elected
- RIPE NCC Charging Scheme 2017 adopted
 - Fees remain the same as 2016
- Members voted to allow RIPE NCC members to create additional LIR accounts
 - We are working on processes to implement this

RIPE NCC Regional Presence



- More focus on RIPE NCC Regional Meetings and community events, member lunches, etc
- Supporting NOGs throughout our service region
- Ongoing support for ENOG events and community
- Engaging with governments in the region, particularly on issues concerning regulation, industry trends and Internet development

RIPE NCC Regional Presence



- We have two staff members based in the region, engaging members and the community across the entire ENOG region

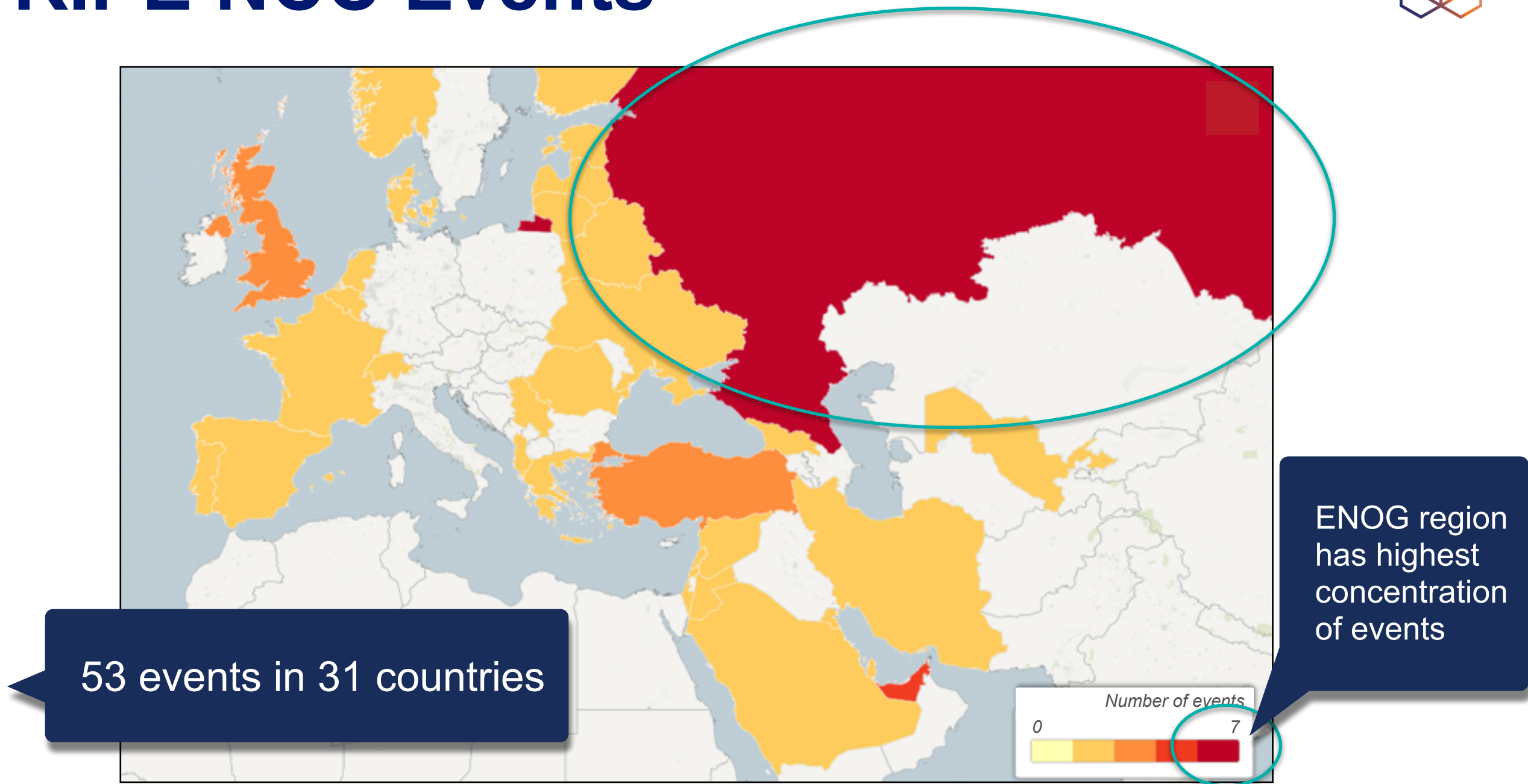


Maxim Burtikov



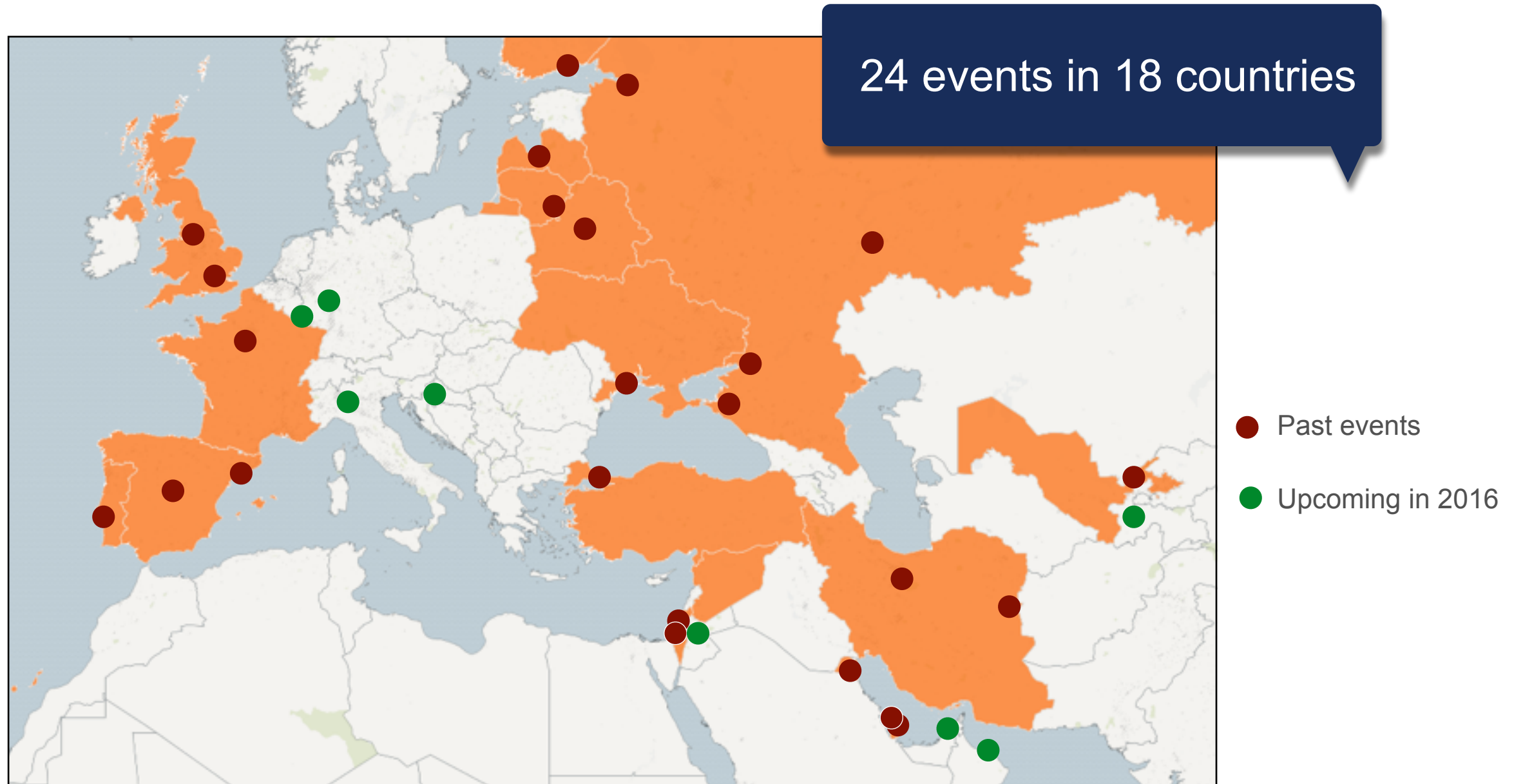
Alex Semenyaka

RIPE NCC Events



- Events organised from 1 Jan. 2015 until present (not including training courses)
- Includes: RIPE Meetings, RIPE NCC Regional Meetings, ENOG, MENOG, SEE, IPv6 Roadshows, etc.

Meeting Our Members



- Member lunches/meetings from 1 Jan. 2015 until present
- www.ripe.net/member-lunches

RIPE Atlas



- 9,390 connected probes running 12,000+ measurements
 - We've nearly reached our goal of 10,000 probes
 - 192 RIPE Atlas Anchors
- Read about RIPE Atlas use cases:
 - <https://labs.ripe.net/atlas/user-experiences>



Resource Certification (RPKI)

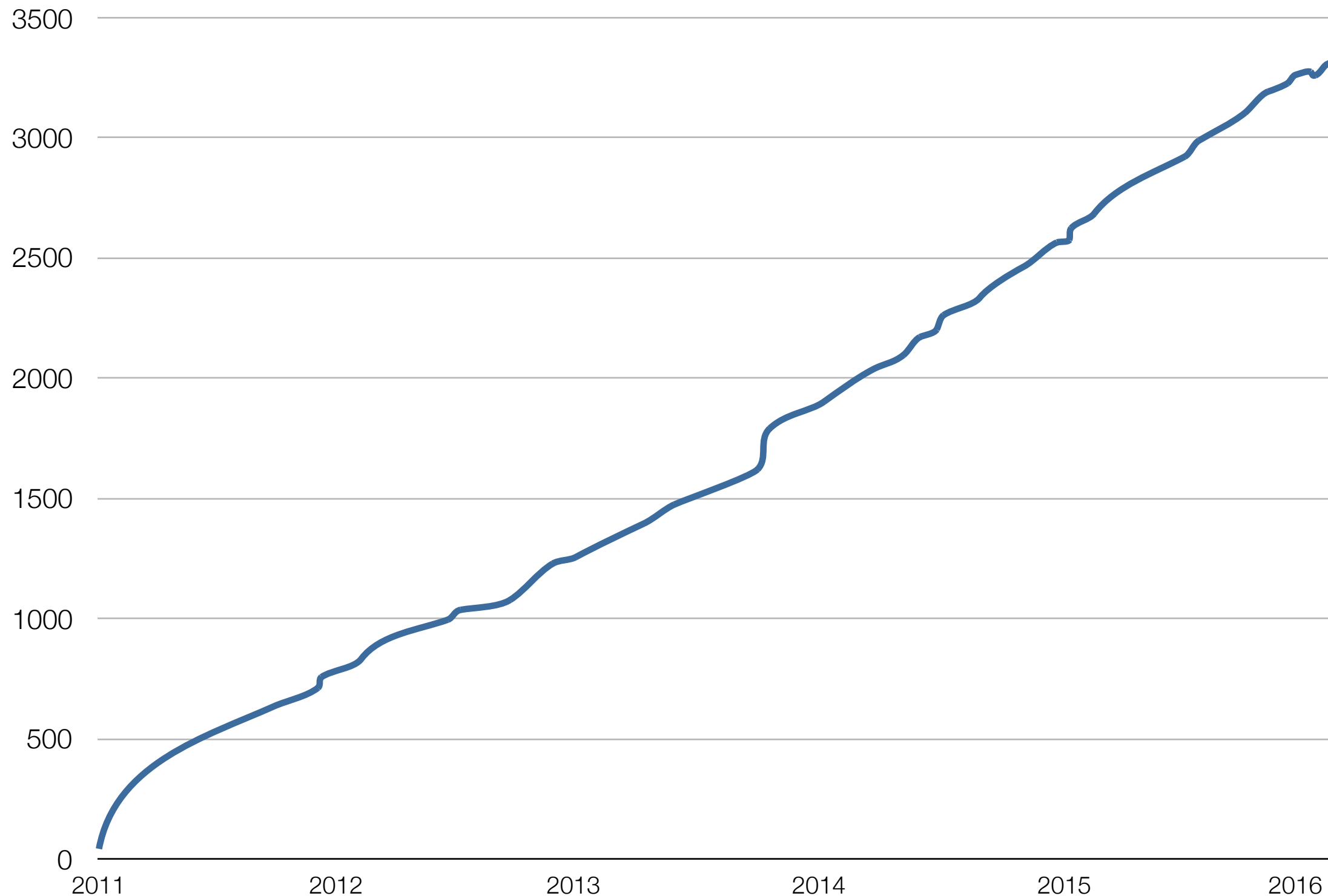


- 3,500+ members have requested a certificate
- Members have created ROAs covering:
 - 2,886 unique ASNs
 - 14,446 IPv4 prefixes
 - 2,222 IPv6 prefixes
- All address space can now be covered
 - Including PI and legacy space

RPKI in our Service Region



Over 25% of LIRs have requested an RPKI certificate



RPKI Validator



- Current version does not match user demand
 - Scalability and functionality improvements are requested
- Proposed solution: Enhance RPKI Validator at a faster pace
 - Modern, stable routing workflow toolset
 - Secure, modular design
 - Integrate IRR functionality
- Does the community support this additional effort? Tell us!

RIPE NCC Academy



- Our new online learning platform
- Trainees can complete courses and be certified for their knowledge
- Complements existing courses and webinars already on offer
- <https://academy.ripe.net>

RIPE Academic Cooperation Initiative



- Connects RIPE with academic community
- Operators: learn about academic Internet research
- Academics: make connections and learn from the industry
- RACI attendees receive tickets, travel and accommodation for RIPE and regional meetings
- All applicants can publish work on RIPE Labs

RIPE NCC Survey 2016



- We run these surveys to find out:
 - How we can better help our members and the community
 - What direction we should be taking in the coming years
- The survey is completely anonymous and shorter than ever before
- Complete the survey and be in with a chance to **win one of five iPads!**
- The survey runs from 27 May to 30 June

www.ripe.net/survey2016



Questions

axel@ripe.net

