

# RIPE NCC Update

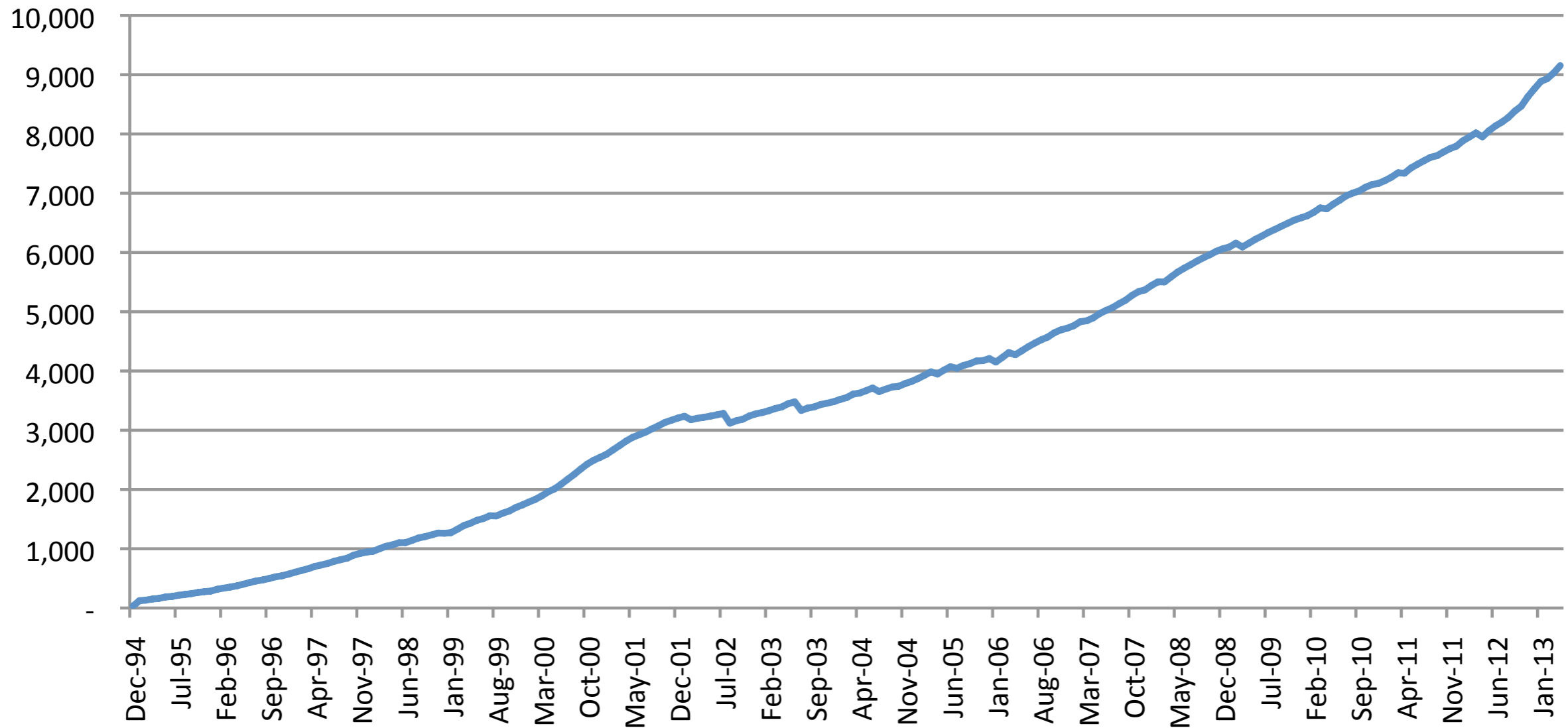
---

ENOG 5

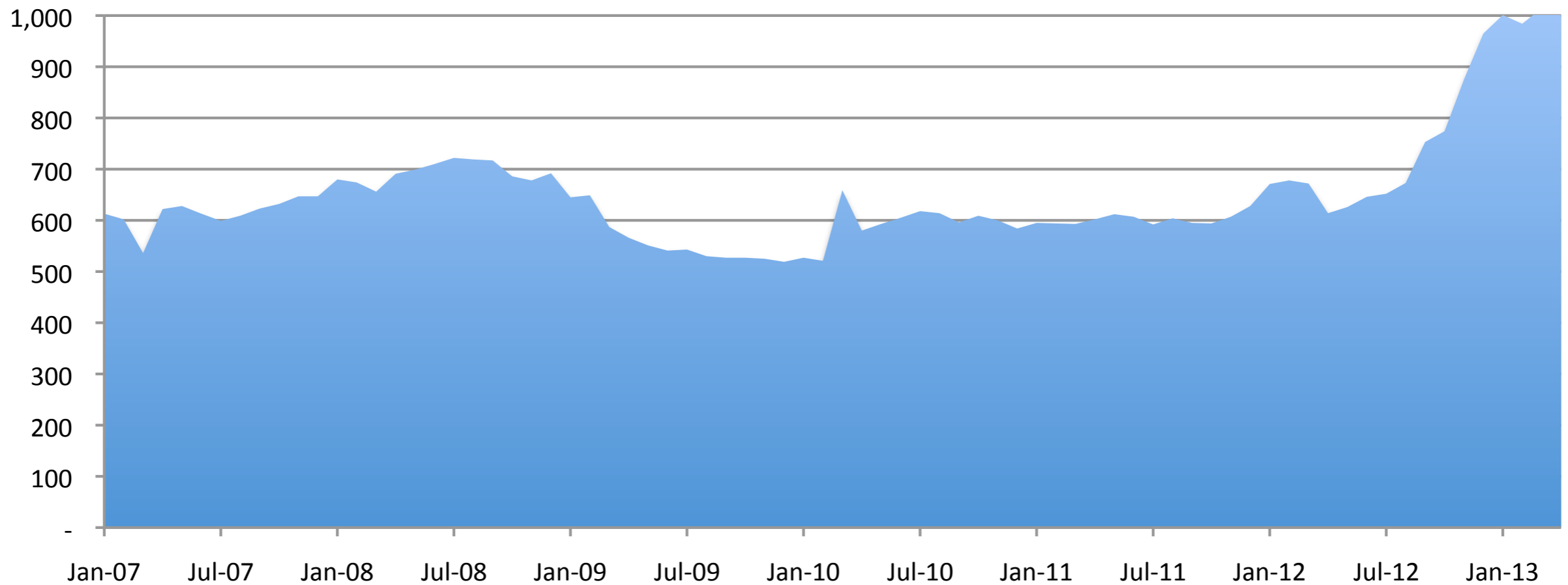
Jochem de Ruig  
Chief Financial Officer  
RIPE NCC



# 9,200 RIPE NCC Members from 76 Countries

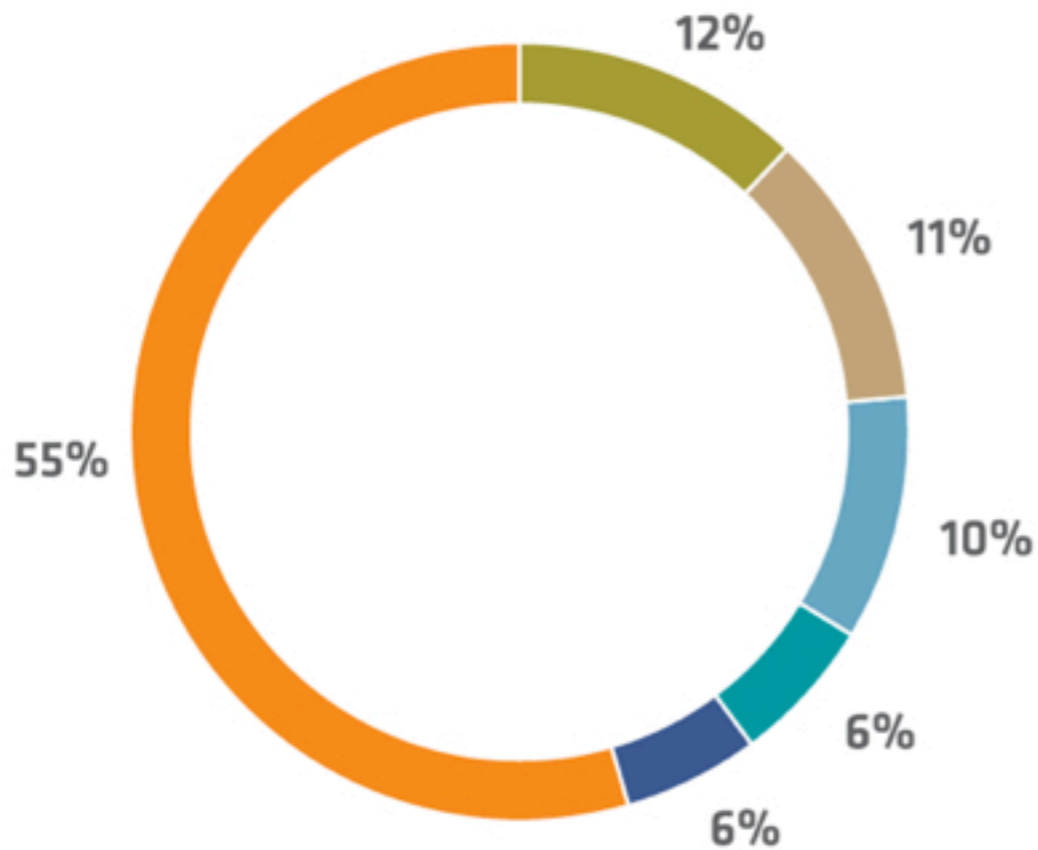


# Membership development - Strong growth



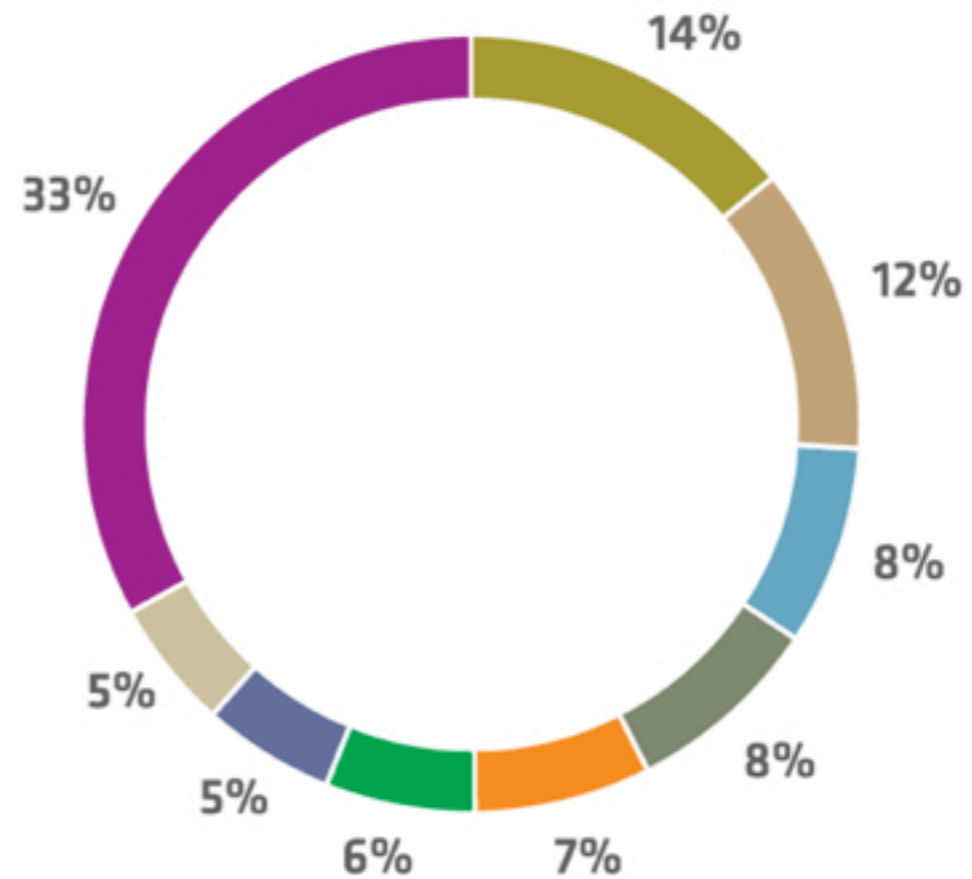
# RIPE NCC Membership 2012

Total Membership by Country



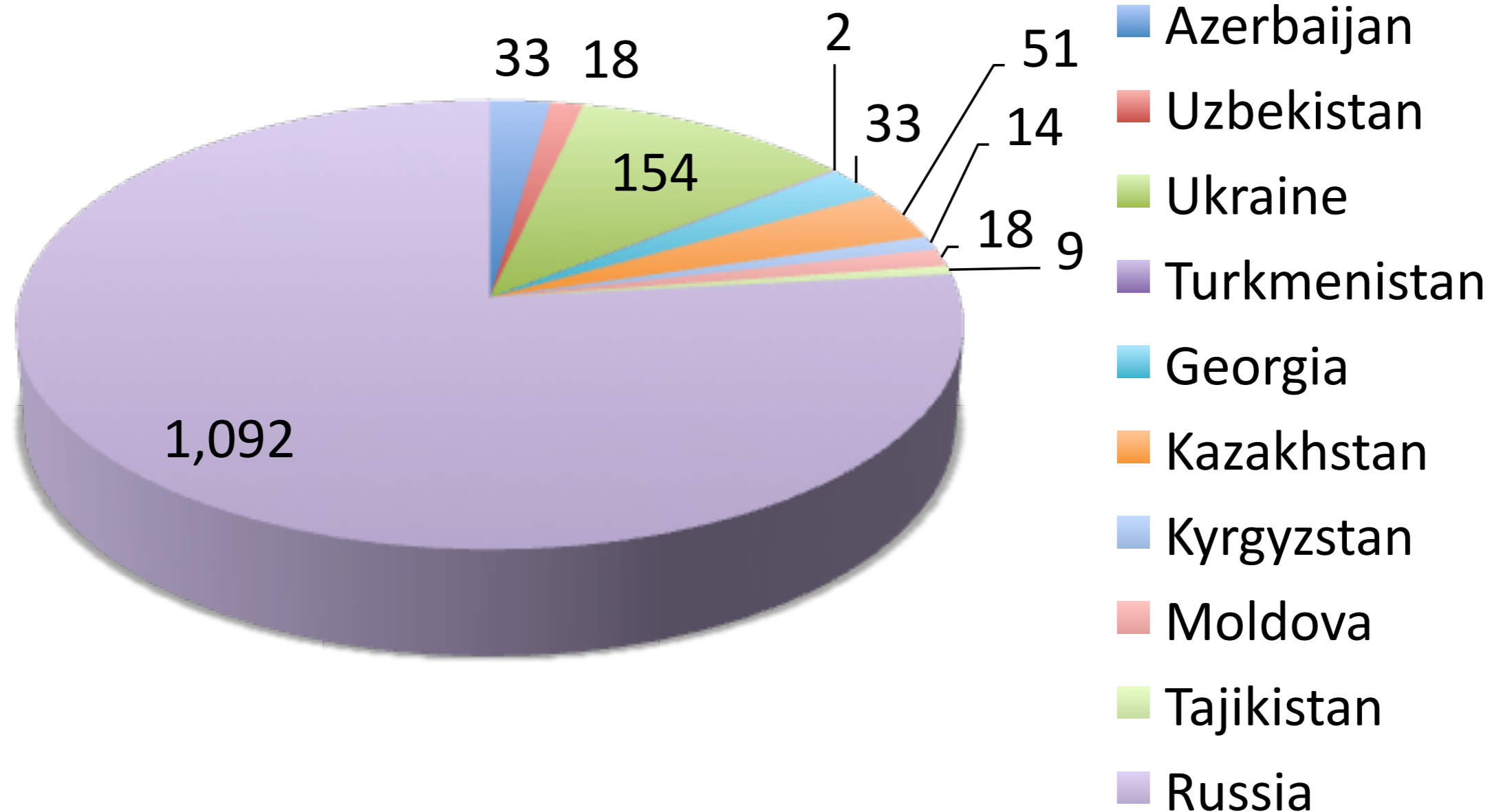
- Russia
- UK
- Germany
- Italy
- France
- Other

New Membership by Country

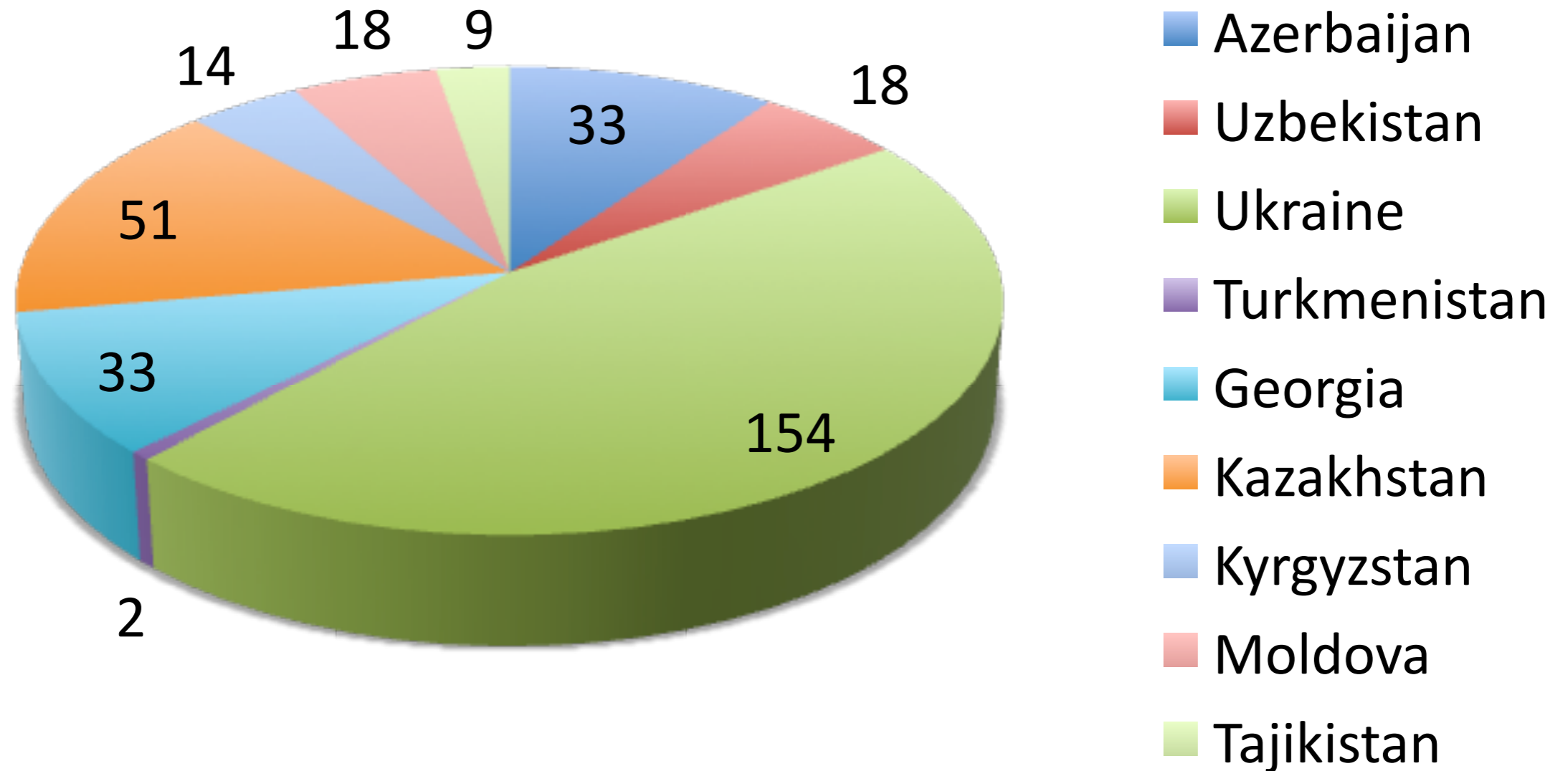


- UK
- Germany
- France
- Netherlands
- Russia
- Spain
- Italy
- Switzerland
- Other

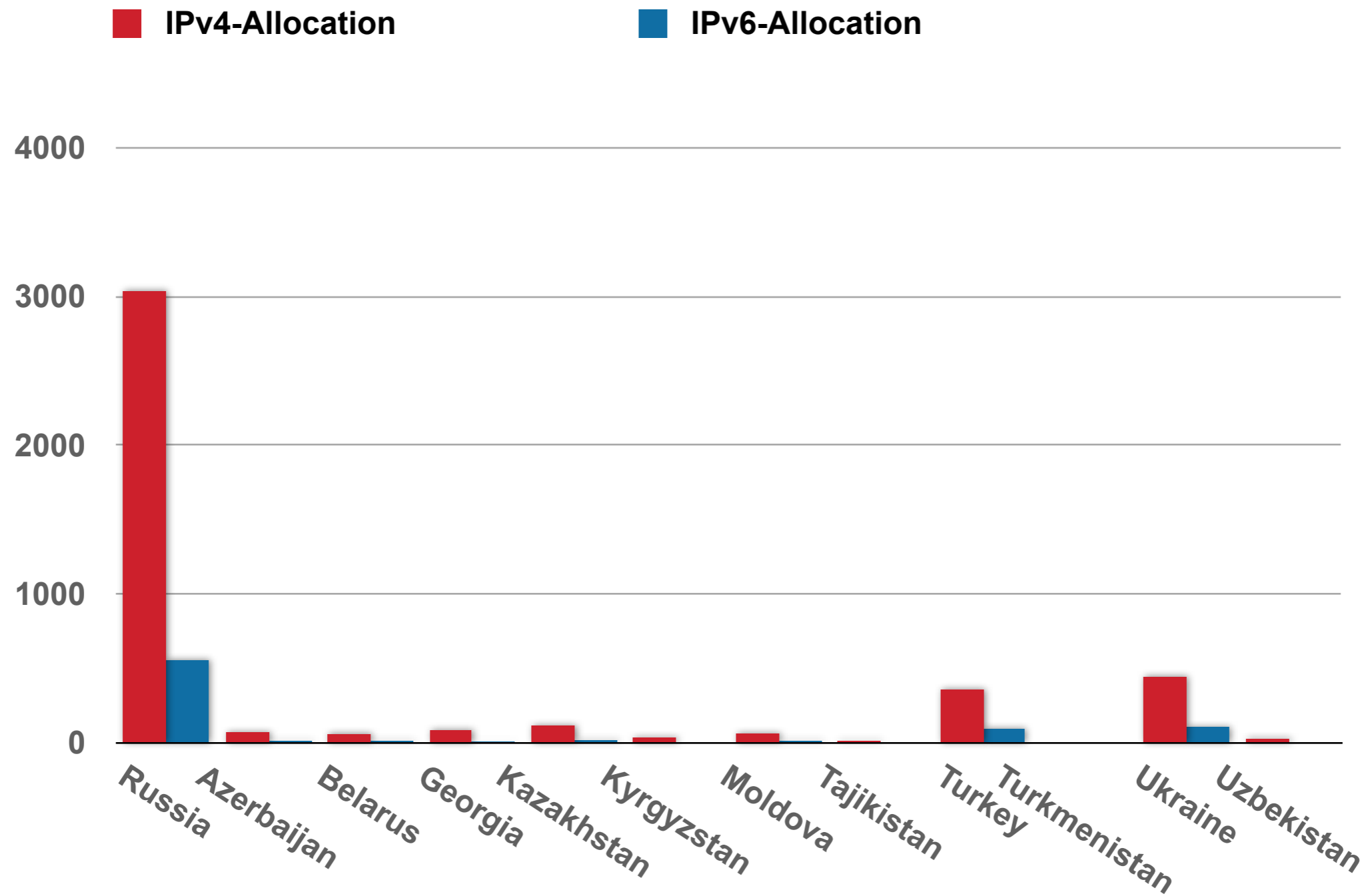
# Number of LIRs in region



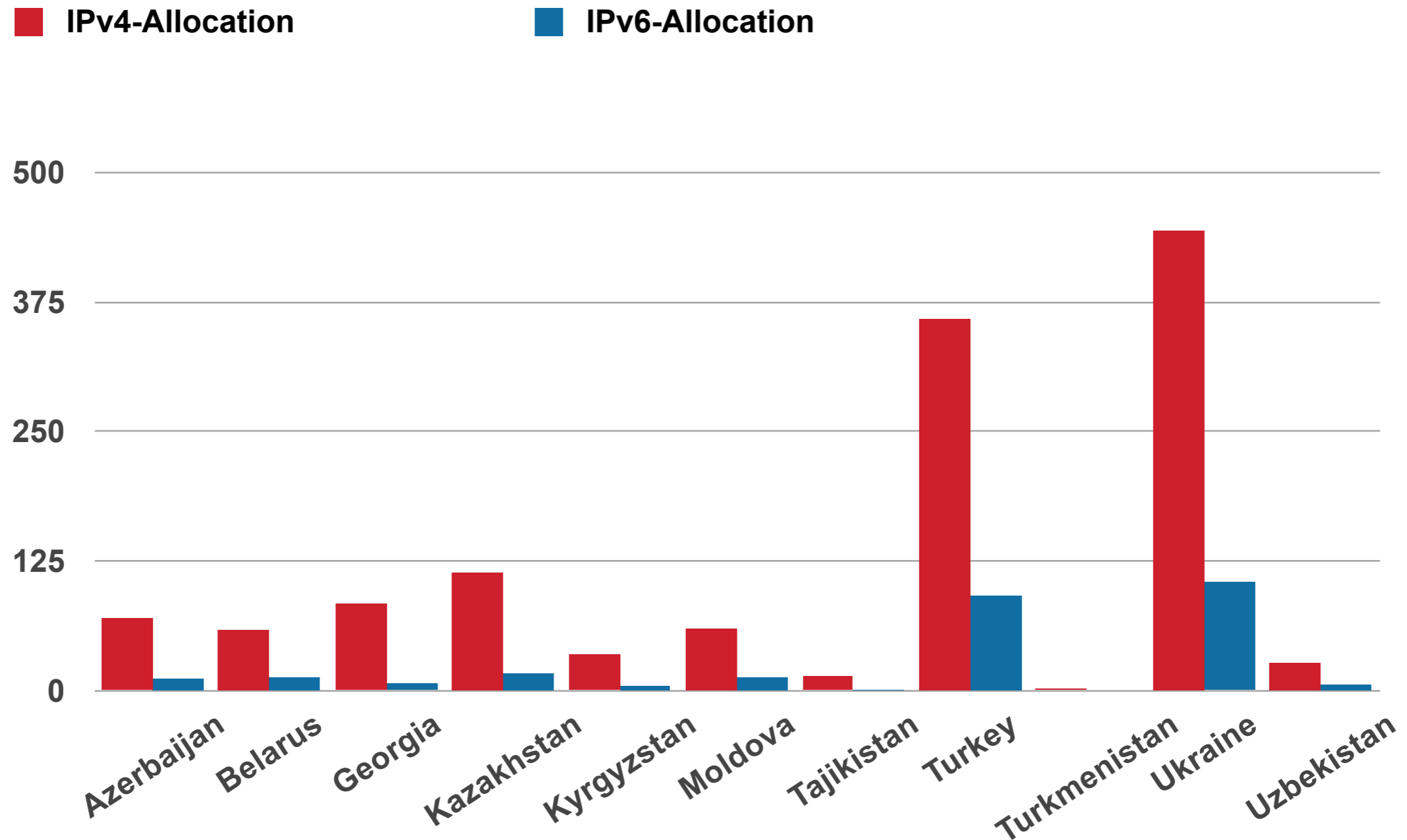
# Number of LIRs in region outside Russia



# IP address Allocations

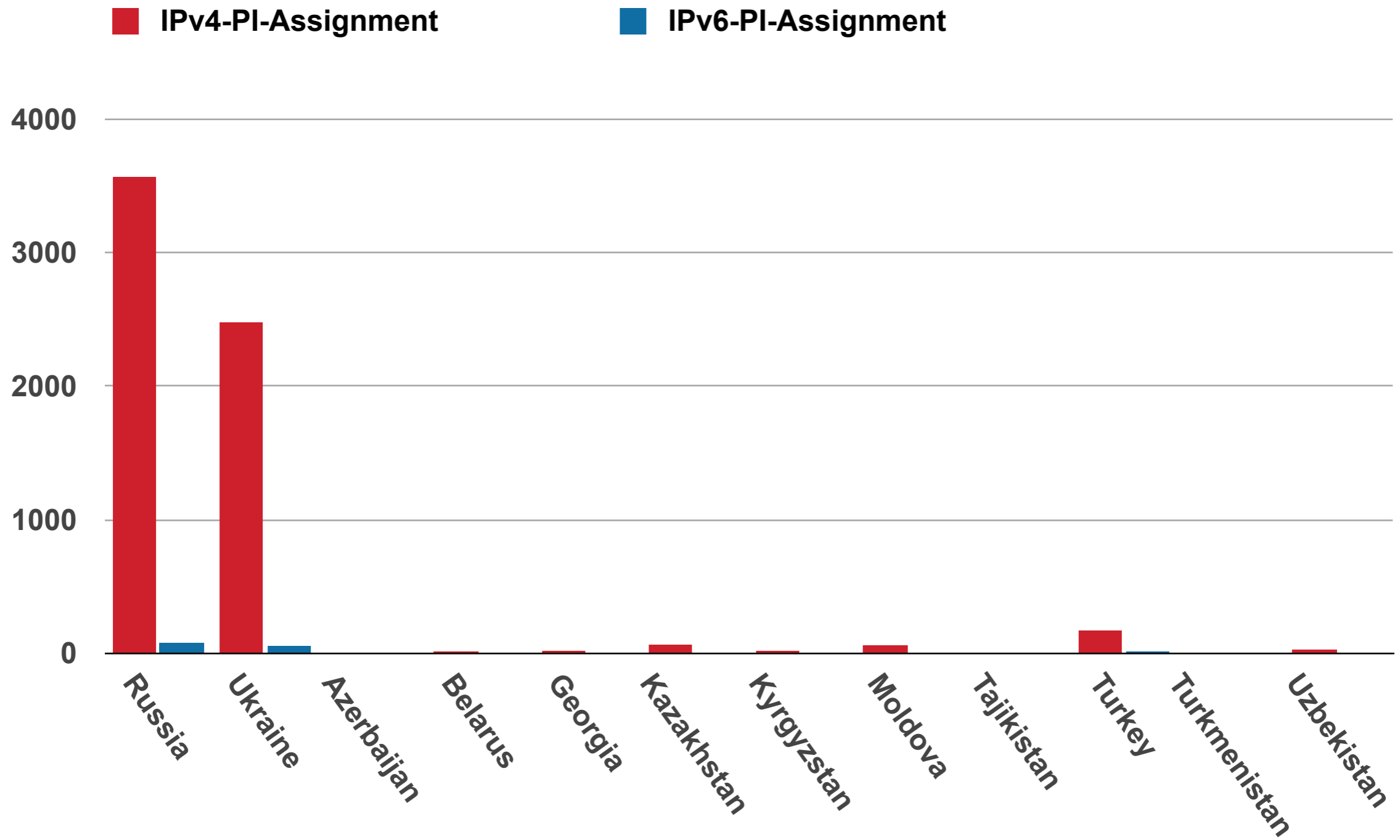


# IP address Allocations (outside Russia)

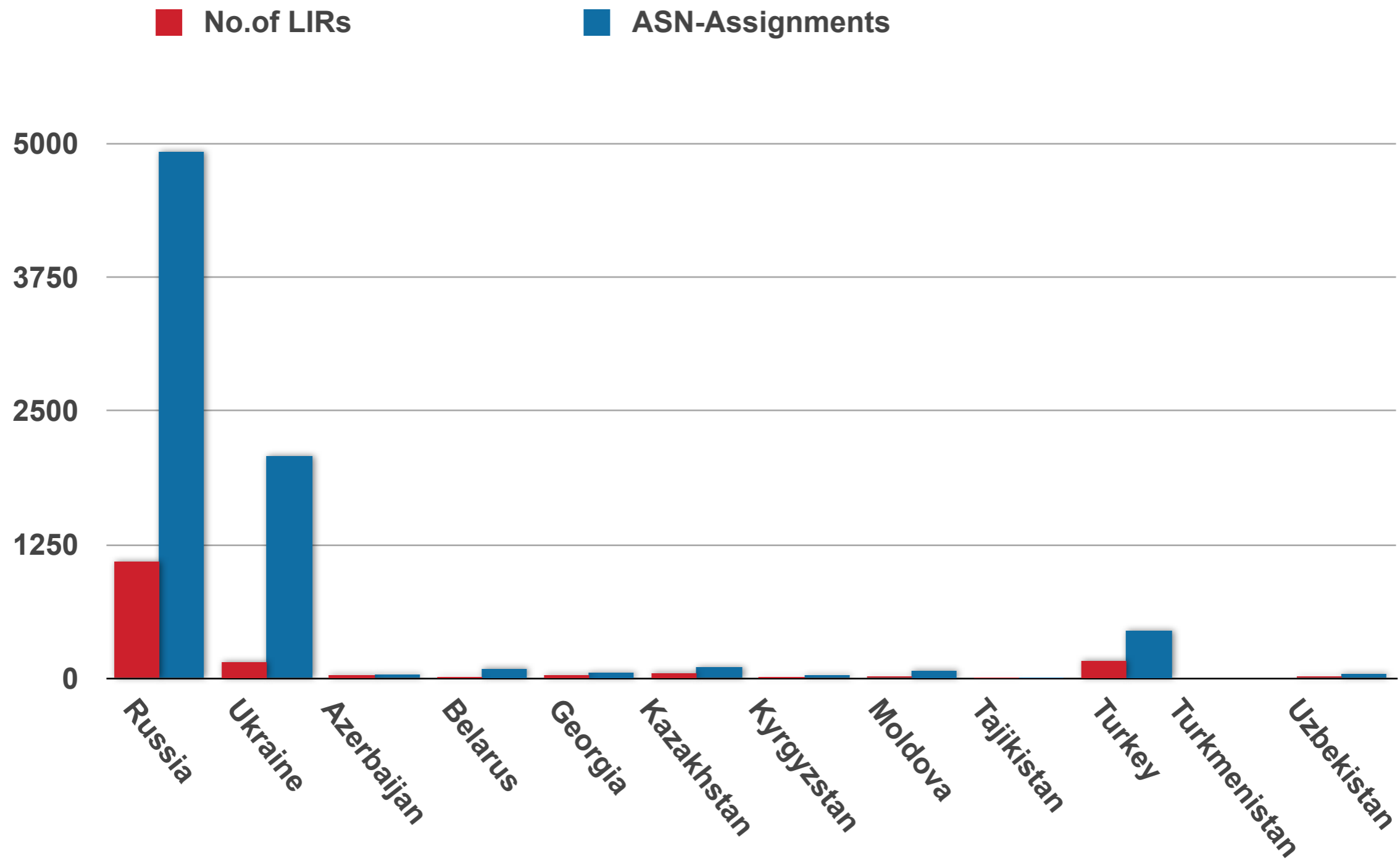




# PI Assignments



# Autonomous Systems

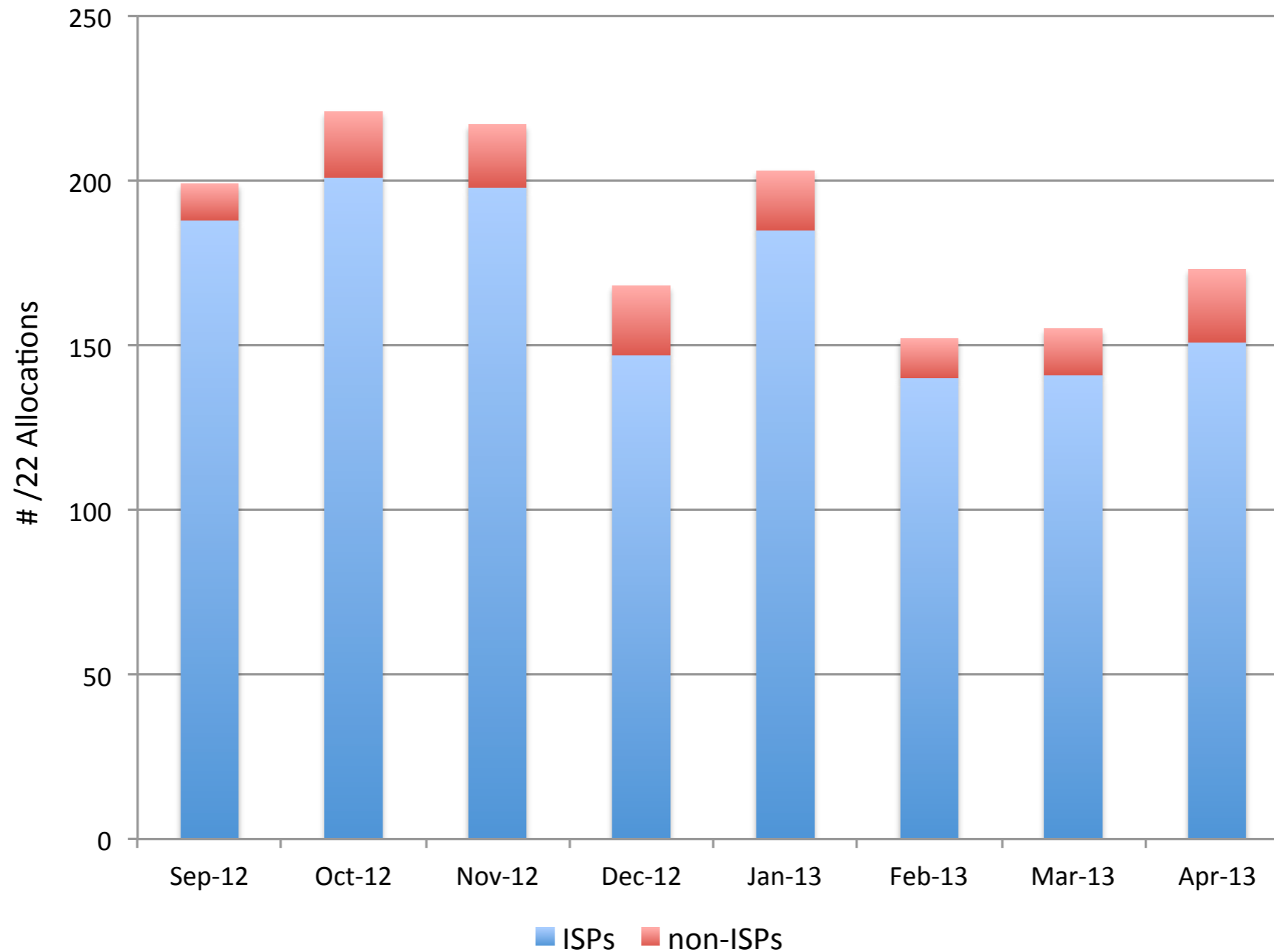


# Last /8 IPv4 Allocation Policy

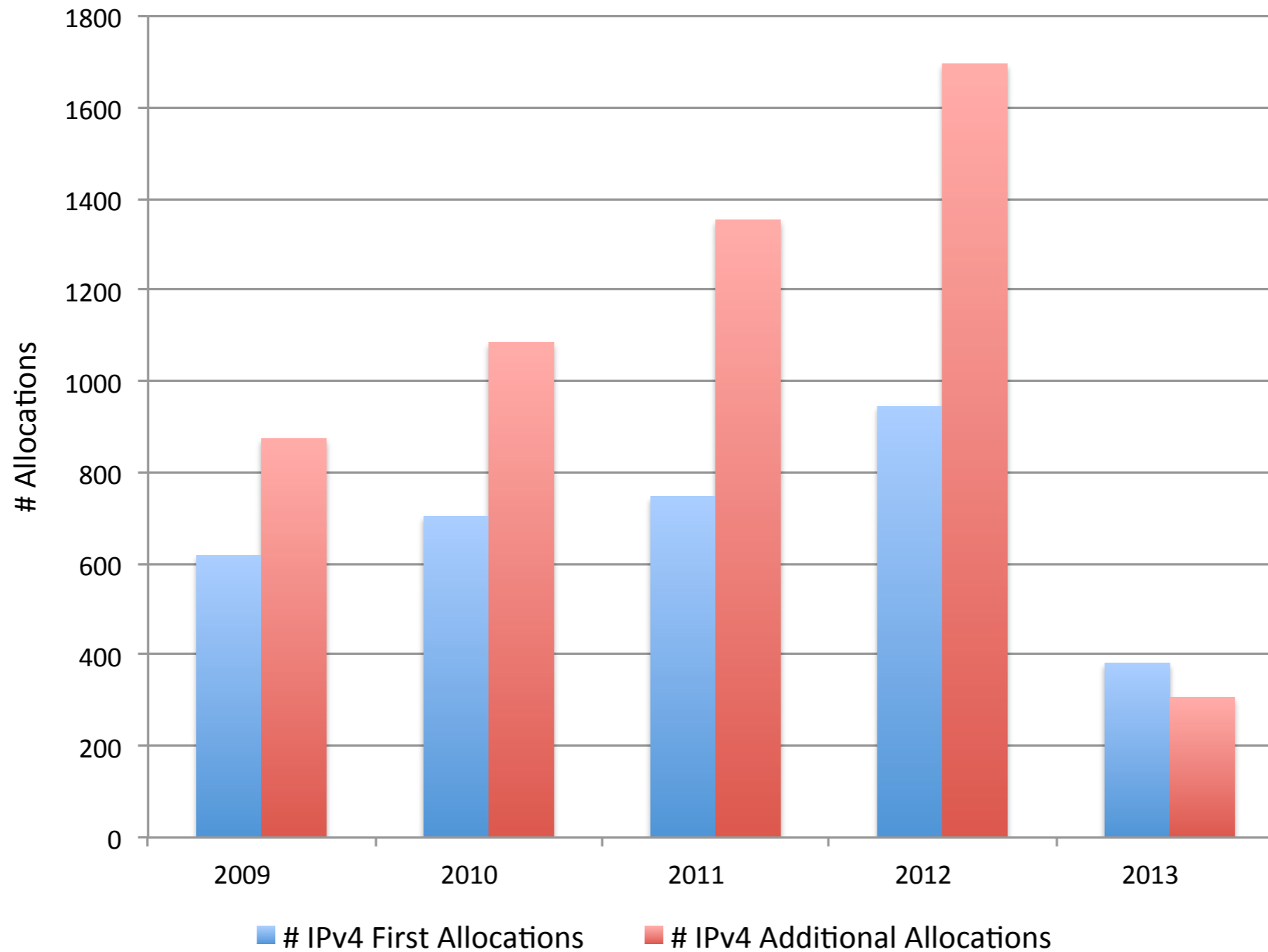
---

- The RIPE NCC reached the last /8 on 14 September 2012
- LIRs can receive **one** /22 (1,024 IPv4 addresses), even if they can justify a larger allocation
  - LIRs must already have an IPv6 allocation from an upstream LIR or the RIPE NCC
  - 1590 /22s issued so far
- Additionally: 7 IXP assignments, one /24 in Russia

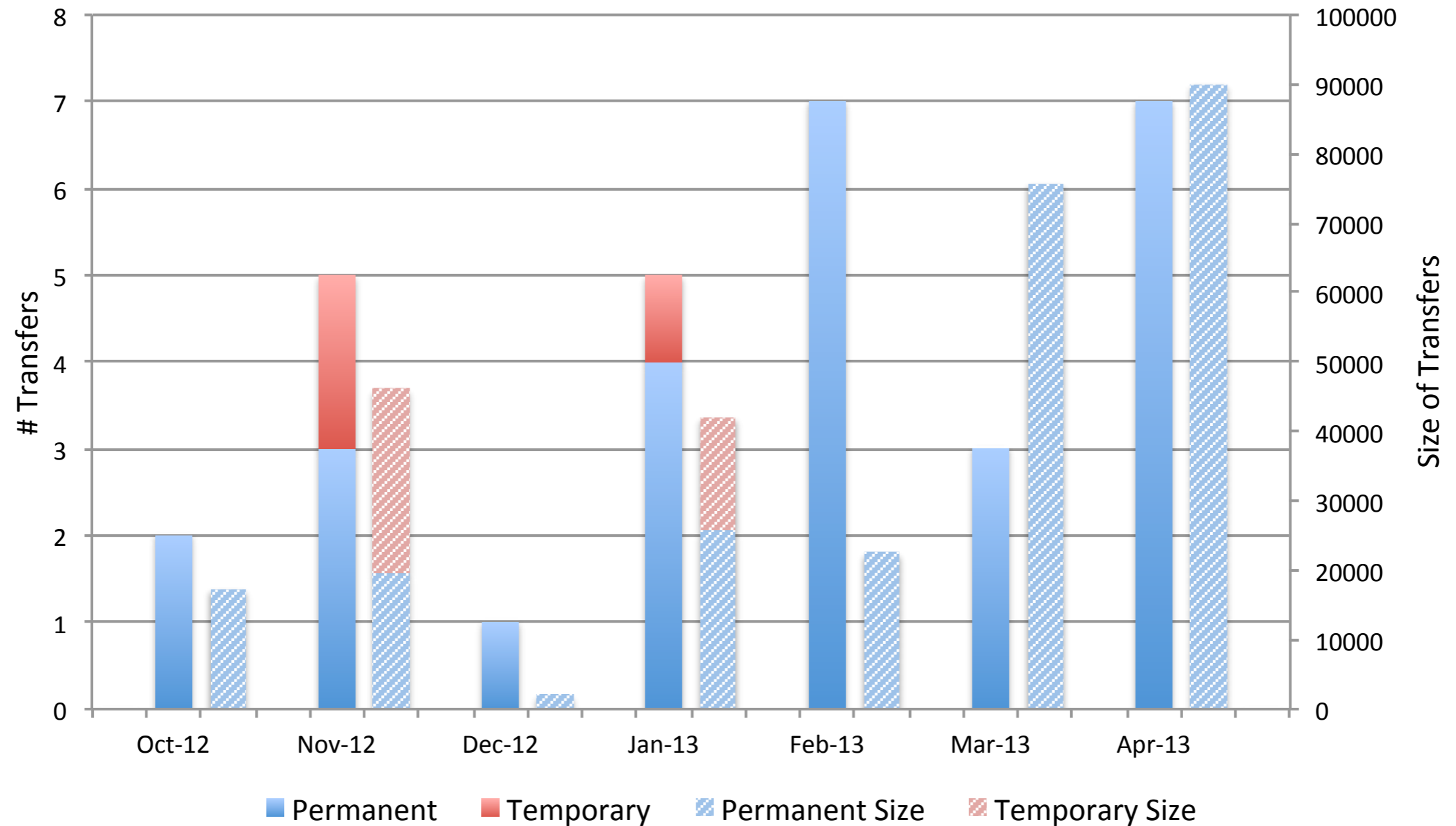
# Allocations from the last /8



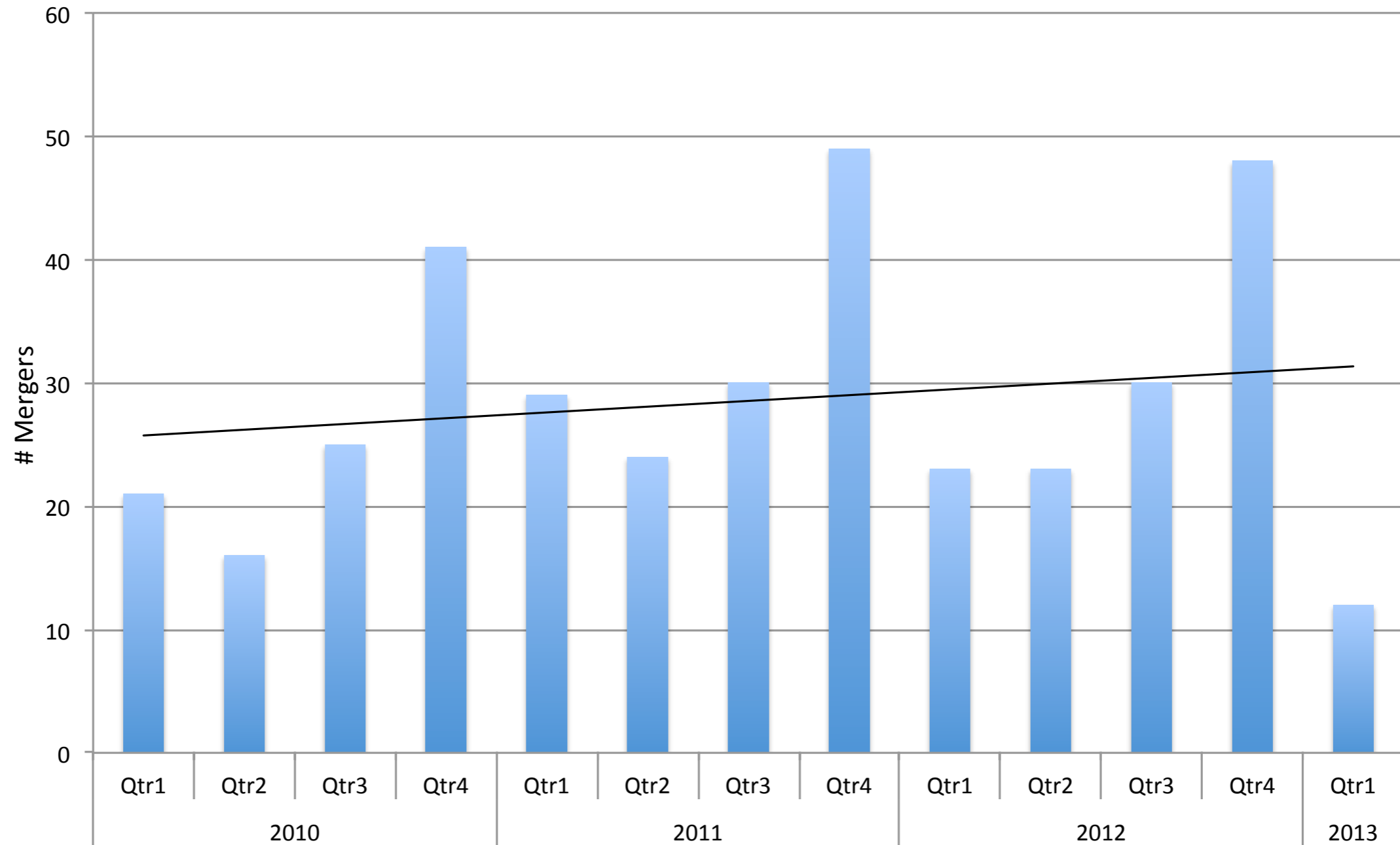
# IPv4 Allocation Trend



# IPv4 Allocation Transfers



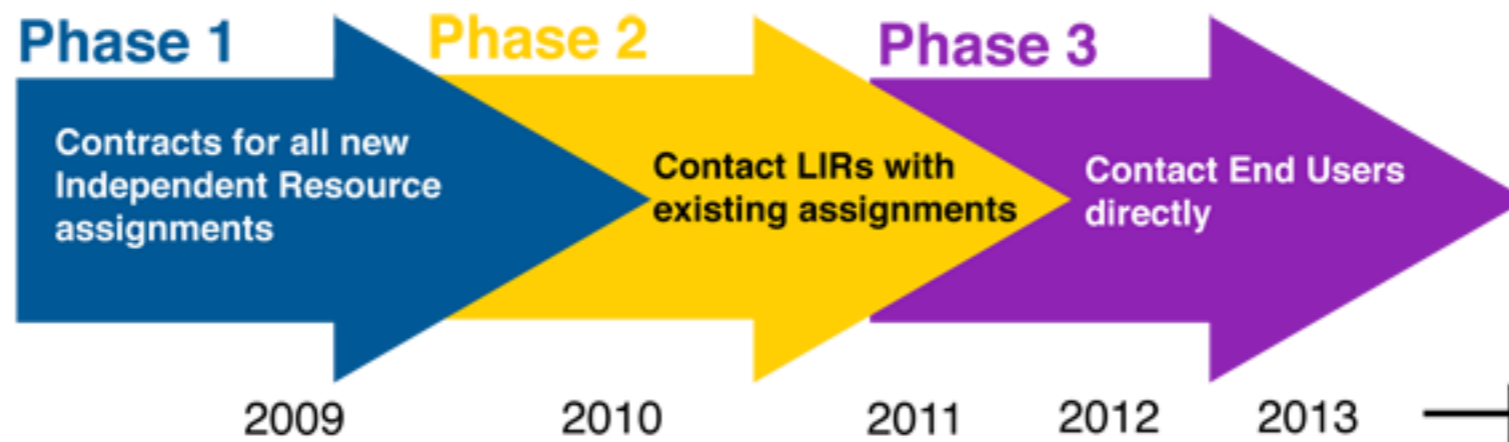
# Mergers Completed



# 2007-01 Update

---

- Currently in Phase 3: Contacting End User directly



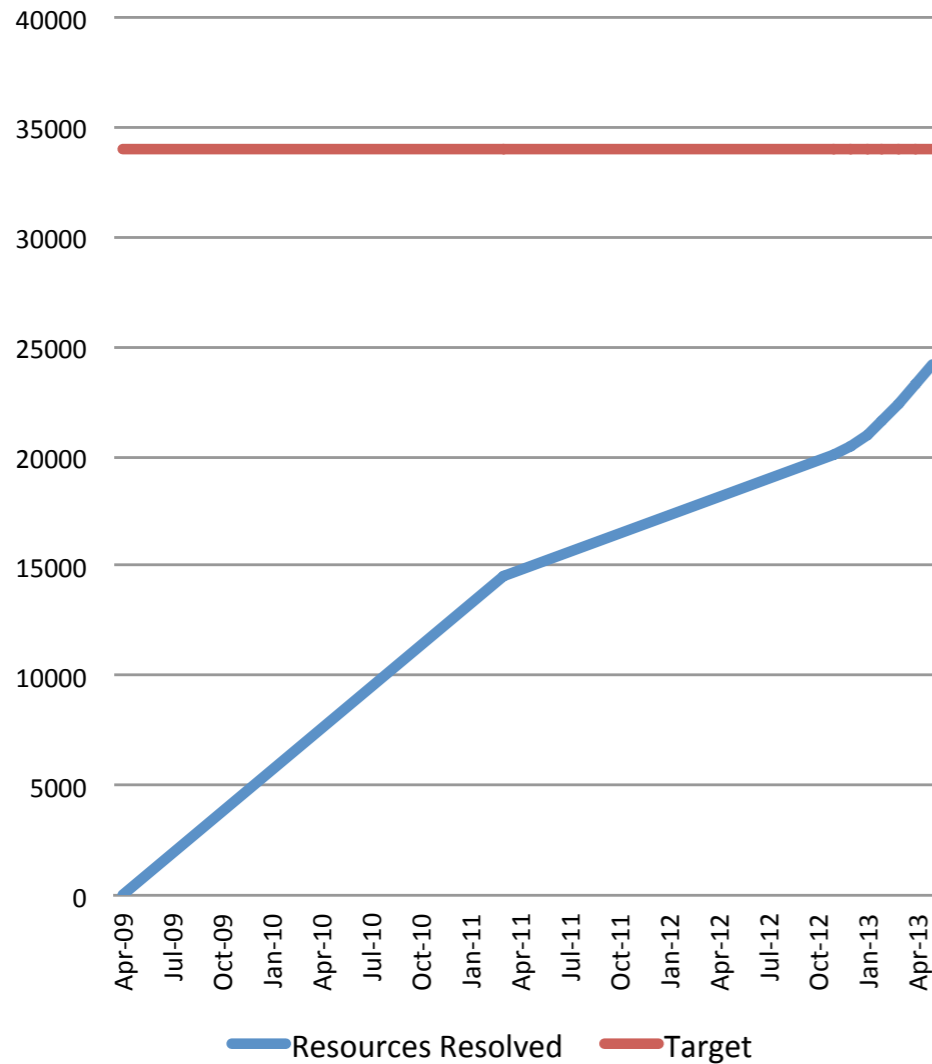
## Challenges:

- Lack of familiarity with RIPE Policy and the RIPE NCC
- Identifying legitimate resource holder
- Ensuring continuity of active networks

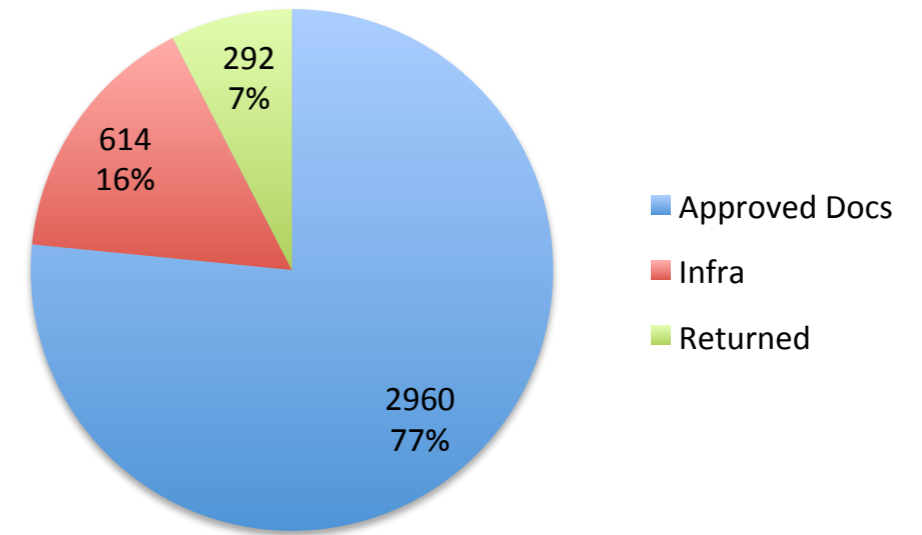


# 2007-01 Update

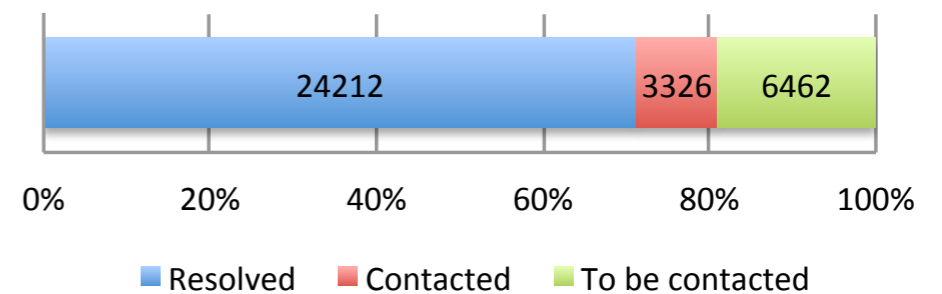
## 2007-01 - Phase 2 & 3



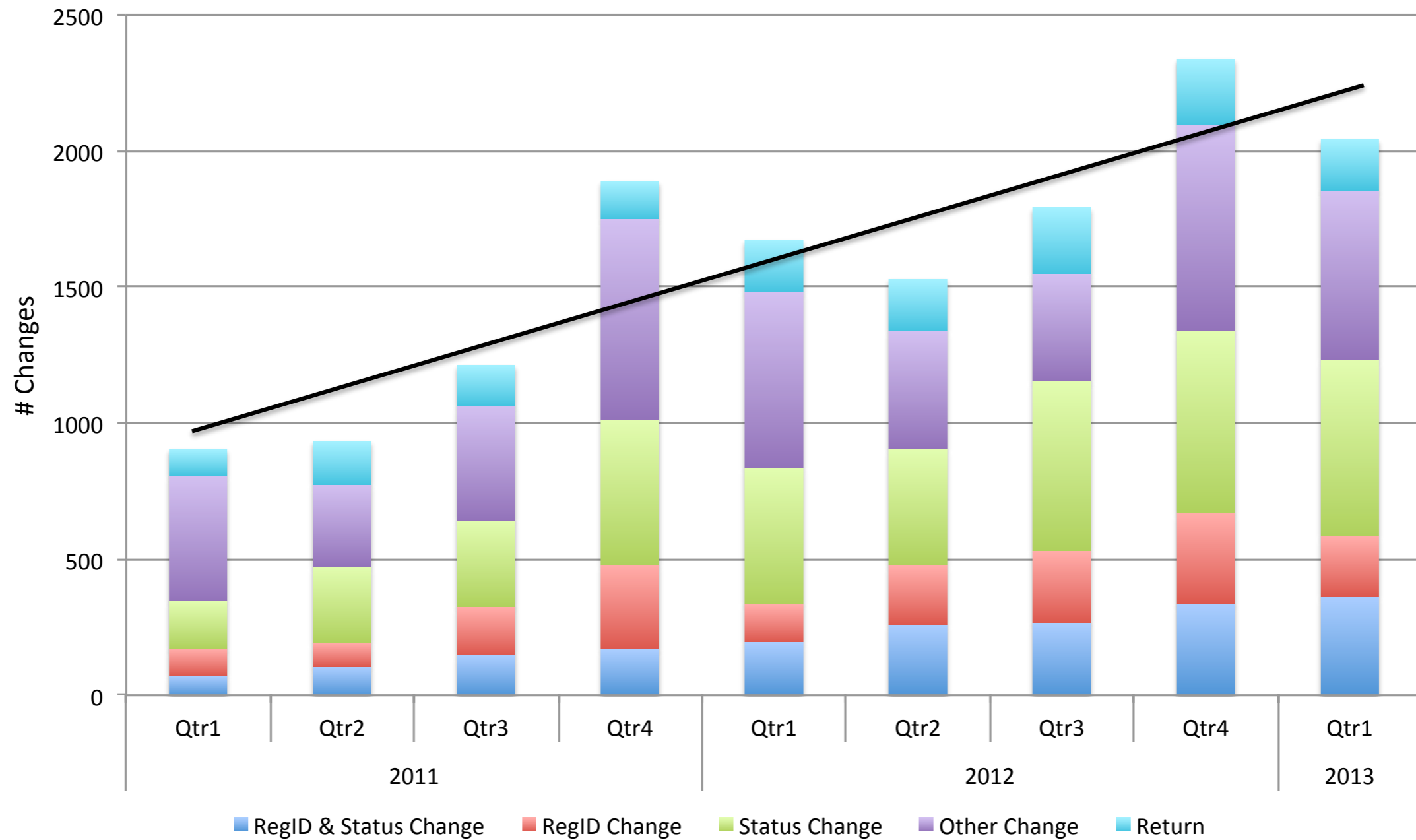
## Results (previous 6 mths)



## Contacted Resource Holders



# Independent Resources: Maintenance



# “Assisted Registry Check”

---

- Maintain the periodic contact between LIRs and the RIPE NCC
- Reduce workload for LIRs
- RIPE NCC provides a report highlighting our observations and recommendations
- Overview of registered information (e.g. contact details)
- Overview of Internet Number Resource consistency (e.g. overlapping assignments)
- Overview of rDNS and route-objects consistency (e.g. check lame reverse delegations and routing registry vs BGP announcements)
- Assist LIRs with improving the data accuracy

# Policy developments

---

- Inter RIR IPv4 transfers (2012-02)
- RIPE NCC services for Legacy holders (2012-07)
- Publication of sponsoring LIR (2012-08)
- No need - post depletion reality cleanup (2013-03)
- Resource certification for non-members (2013-04)

<https://www.ripe.net/ripe/policies/current-proposals/current-policy-proposals>

# Regional Outreach

---

- Membership growth and diversification
- We must engage with our **entire** membership across our service region
- Differing needs and issues, different stages of development across regions
- Developing our strategy to meet these needs
- Enhance regional presence - staff in the regions

# Update from RIPE NCC General Meeting

---

- Approved Annual report, Financial report
- New Charging Scheme 2014!
  - NO changes in the structure: one LIR - one Fee
  - New fee EUR 1,750 (currently EUR 1,800)
- Re-elected Board members:
  - Nigel Titley and Remco van Mook
- e-Voting possible for all members!

# Billing information for RU and UA

The screenshot shows the RIPE NCC website interface. At the top, there are navigation tabs for 'Internet Coordination', 'Data & Tools', 'LIR Services', and 'RIPE Community'. The main header features the RIPE NCC logo and a search bar. Below the header is a navigation menu with options like 'LIR Portal', 'Information For New LIRs', 'Member Support', 'Resource Management', 'Training', and 'About The RIPE NCC'. The 'Member Support' tab is active, leading to a page titled 'Information for members from Russia and Ukraine'. This page includes a breadcrumb trail, a 'Related' section with 'Regional Meetings', and a 'Quick Links' section with various options like 'Become a Member', 'Application Complete?', 'Request Forms & Supporting Notes', 'Help & Support', 'List of Members', 'LIR Locator', and 'FAQs'. There is also a 'RIPE NCC Survey 2013' section with a 'Take the RIPE NCC Survey 2013' button. At the bottom right, there is a 'RIPE Database Search' box.

Internet Coordination Data & Tools LIR Services RIPE Community Site Map | Contact | Help | RIPE Database Search

RIPE NCC RIPE NETWORK COORDINATION CENTRE

Search Site Search

LIR Portal Information For New LIRs Member Support Resource Management Training About The RIPE NCC

Membership Information · Become a Member · FAQs · Quality Audit · RIPE NCC Access

You are here: Home > LIR Services > Member Support > Membership Information > Membership Fees > Information for members from Russia and Ukraine

## Information for members from Russia and Ukraine

— MEMBERSHIP, BILLING

### Documentation

The Russian Fact Book provides information for Russian members of the RIPE NCC on topics including:

1. Setting up an LIR
2. RIPE NCC corporate and billing documents
3. Legal issues for Russian members

Below, you can also find PDF versions of the Russian Invoice Template and other documents that we send to our Russian and Ukrainian members.

### Russian fact book

- Russian Fact Book (in English) (pdf 241 KB)
- Новый Локальный Интернет-Реестр (LIR) в России - Russian Fact Book (pdf 320 KB)
- Приложение - Russian Fact Book Appendix (pdf 234 KB)

### Templates

- Счет - Russian Invoice Template (pdf 52 KB)
- Акт сдачи-приемки - RIPE NCC Act of Acceptance (for Ukraine) (pdf 34 KB)
- Соглашение об оказании услуг RIPE NCC - RIPE NCC Service Agreement (for Ukraine) (pdf 130 KB)
- Соглашение о предоставлении и обслуживании адреса в Интернете - Independent Assignment Request and Maintenance Agreement (bilingual) (PDF 224KB)

### Related

Regional Meetings >

### Quick Links

- Become a Member >
- Application Complete? >
- Request Forms & Supporting Notes >
- Help & Support >
- List of Members >
- LIR Locator >
- FAQs >

### RIPE NCC Survey 2013

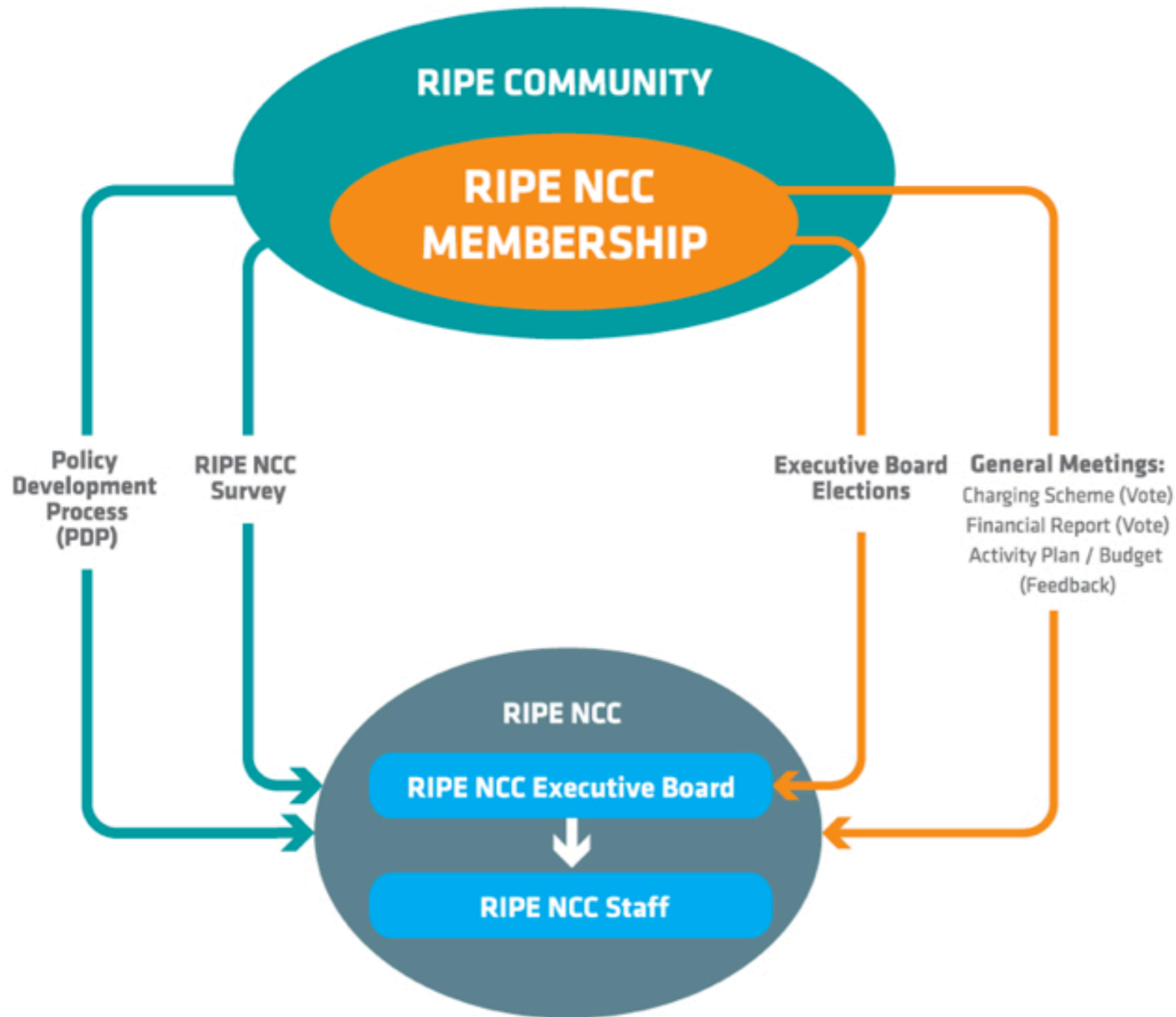
Take the RIPE NCC Survey 2013

### RIPE Database Search

search

<https://www.ripe.net/lir-services/member-support/info/billing/russia>

# Many Ways to Give Input



- Plus:
  - Mailing Lists
  - RIPE NCC Roadmap
  - Social media channels
  - Face-to-face



Questions?

