

D-Link[®]
Building Networks for People



Не мала баба клопоту!

Зима пришла неожиданно!

Сосуществование IPv6 и IPv4

Dual stack и 6in4

4213 - Dual IP layer, Configured tunneling of IPv6 over IPv4

6to4

3056 - Connection of IPv6 Domains via IPv4 Clouds

3068 - An Anycast Prefix for 6to4 Relay Routers

3964 - Security Considerations for 6to4

6343 - Advisory Guidelines for 6to4 Deployment

6rd

5969- IPv6 Rapid Deployment on IPv4 Infrastructures

6over4

2529 - Transmission of IPv6 over IPv4 Domains without Explicit Tunnels

NAT

6145 - Stateless IP/ICMP Translation Algorithm (SIIT), which translates between IPv4 and IPv6 packet headers (including ICMP headers)

6144 - Framework for IPv4/IPv6 Translation

6052 - IPv6 Addressing of IPv4/IPv6 Translators

6146 - Stateful NAT64: Network Address and Protocol Translation from IPv6 Clients to IPv4 Servers

6296 - IPv6-to-IPv6 Network Prefix Translation

Подключение клиентов

3633 - IPv6 Prefix Options for DHCPv6 (DHCP-PD)

3769 - Requirements IPv6 Prefix Delegation

6276 - DHCPv6 Prefix Delegation for NEMO

- IPv4/v6 Dual Stack
- IPv6 Tunneling (Static, 6to4, GRE, ISATAP)
- Neighbor Discovery
- IPv6 ND Snooping (IMPB)
- MLD v1/v2 Snooping
- MLD v1/v2
- QoS

Механизмы управления

- Web Management
- Telnet Server/Client
- SSH
- SSL
- TFTP Client
- SNMP v1/v2c/v3
- ICMP
- IPv6 Ping/Traceroute
- SNTP/NTP
- sFlow
- BootP/DHCP client
- IPv6 RADIUS
- DHCPv6 Server

Механизмы безопасности

- ACL
- Web- based Access Control (WAC)
- DHCPv6 Relay Agent
- DHCPv6 Snooping
- IMPB

Протоколы маршрутизации

- IPv6 Static Routing
- RIPng
- OSPFv3
- BGPv4+
- IPv6 Static IP Multicast Route
- PIM-DM v6
- PIM-SM v6
- PIM-SSM v6
- PIM-SDM v6
- Policy-based Routing
- VRRPv3
- Multi Path Routing

DES-7200

IPv6 Уже реализовано

- IPv4/v6 Dual Stack
- IPv6 Tunneling (Static, 6to4, ISATAP)
- Neighbor Discovery
- VRRPv3
- IPv6 Static Routing
- RIPng
- OSPFv3
- BGP4+
- Policy-based Routing
- Multi Path Routing
- MLD v1/v2 Snooping
- MLD v1/v2
- PIM-SM v6
- ACL
- QoS
- SSH
- IMPB
- Web Management
- Telnet Server/Client
- TFTP Client
- SNMP v1/v2c/v3
- ICMP
- IPv6 Ping/Traceroute
- DHCPv6 Relay Agent
- DHCPv6 Server
- DNS Client
- SNTP/NTP
- IPFIX
- BootP/DHCP client



DES-7206



DES-7210



DGS-6604

IPv6

Уже реализовано

- IPv4/v6 Dual Stack
- IPv6 Tunneling (Static, 6to4, ISATAP)
- Neighbor Discovery
- IPv6 Static Routing
- RIPng
- OSPFv3
- Policy-based Routing
- Multi Path Routing
- ACL
- QoS
- Telnet Server/Client
- ICMP
- IPv6 Ping/Traceroute
- DHCPv6 Relay Agent
- SNTP/NTP
- BootP/DHCP client
- SNMP v1/v2c/v3
- Syslog



DGS-6604

IPv6

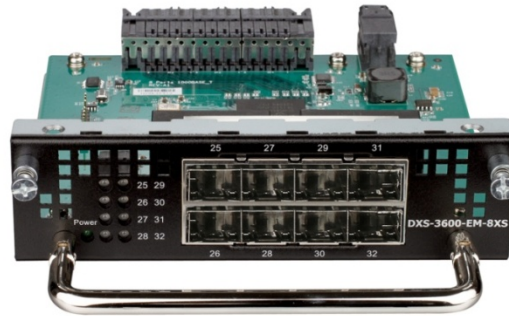
Будет реализовано

- BGPv4+
- VRRPv3
- MLD v1/v2 Snooping
- MLD v1/v2
- PIM-SM v6
- PIM-DM v6
- PIM-SSM v6
- PIM-SDM v6
- IPv6 Static IP Multicast Route
- DHCPv6 Snooping
- IPv6 ND Snooping (IMPB)
- Support IPv6 RADIUS
- Web- based Access Control (WAC) IPv6
- Web Management
- SSH
- SSL
- IMPB
- TFTP Client
- DHCPv6 Server
- SNTP/NTP
- sFlow

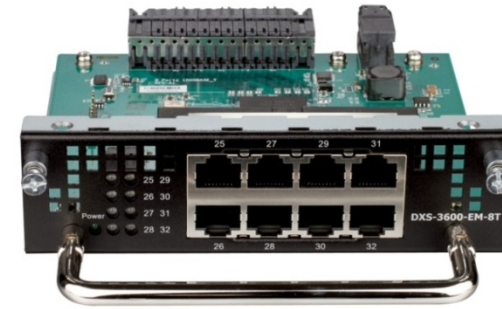
DXS-3600-32S



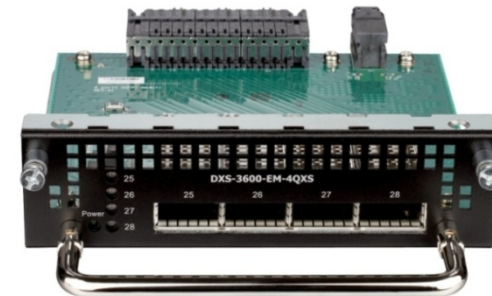
DXS-3600-EM-4XT



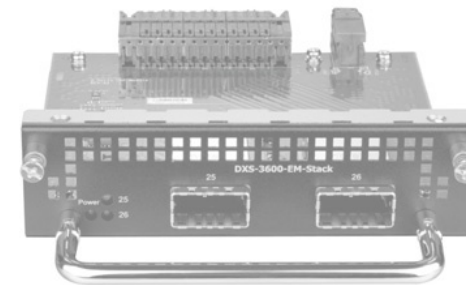
DXS-3600-EM-8XS



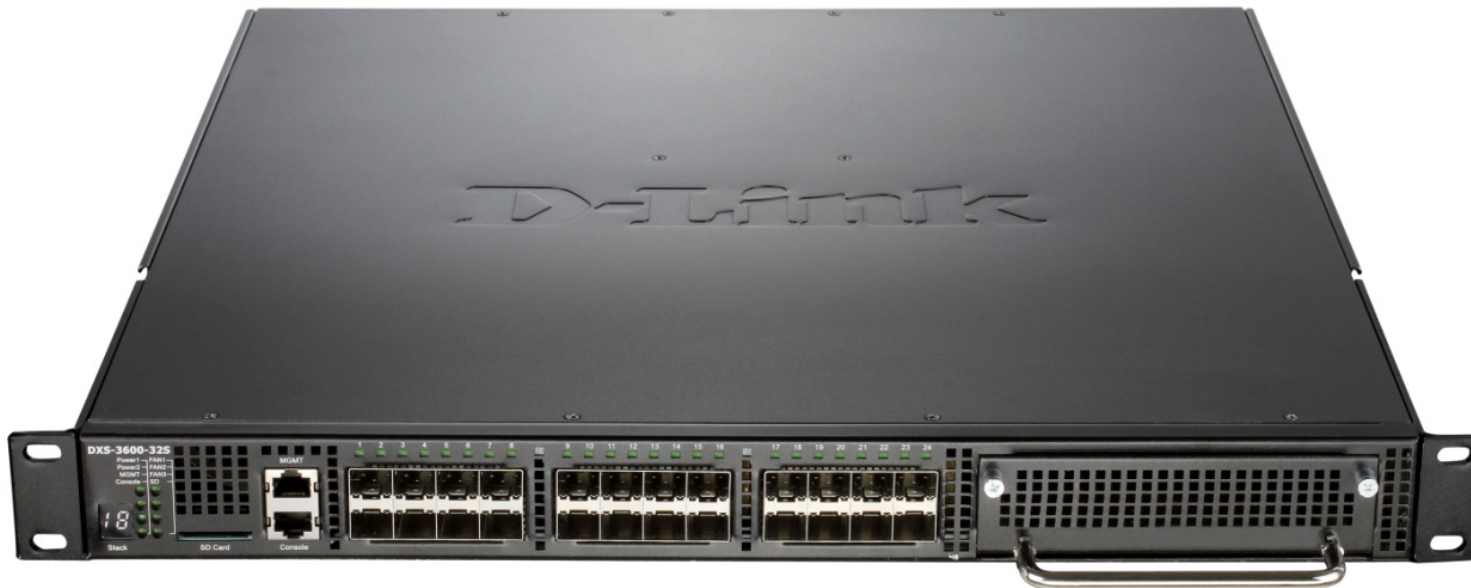
DXS-3600-EM-8T



DXS-3600-EM-4QXS
2012Q4



DXS-3600-EM-Stack
2013Q2



DXS-3600-32S

IPv6

Уже реализовано

- IPv4/v6 Dual Stack
- QoS
- ACL
- ICMP
- IPv6 Ping/Traceroute
- SNTP/NTP

Будет реализовано

- Neighbor Discovery
- IPv6 Tunneling (Static, 6to4, ISATAP)
- RIPng
- OSPFv3
- IPv6 Static Routing
- BGPv4+
- VRRPv3
- MLD v1/v2 Snooping
- MLD v1/v2
- PIM-SM v6
- PIM-DM v6
- PIM-SSM v6
- PIM-SDM v6
- IPv6 Static IP Multicast Route
- DHCPv6 Snooping
- IPv6 ND Snooping (IMPB)
- Multi Path Routing
- Support IPv6 RADIUS
- Telnet Server/Client
- FTP Client
- Web- based Access Control (WAC) IPv6
- Web Management
- SSH
- SSL
- IMPB
- TFTP Client
- DHCPv6 Server
- SNTP/NTP
- sFlow
- SNMP v1/v2c/v3
- Syslog
- BootP/DHCP client
- DHCPv6 Relay Agent
- DNS Relay

DGS-3620

D-Link
Building Networks for People

IPv6

Уже реализовано

- IPv4/v6 Dual Stack
- IPv6 Tunneling
- Neighbor Discovery
- IPv6 Static Routing
- RIPng
- OSPFv3
- Policy-based Routing
- Multi Path Routing
- MLD v1/v2 Snooping
- MLD v1/v2
- PIM-SM v6
- SSH
- SSL
- IMPB
- DHCPv6 Snooping
- IPv6 ND Snooping (IMPB)
- ACL
- QoS
- Support IPv6 RADIUS
- WAC IPv6
- Web Management
- Telnet Server/Client
- TFTP Client
- SNMP v1/v2c/v3
- ICMP
- IPv6 Ping/Traceroute
- DHCPv6 Relay Agent
- DHCPv6 Server
- SNTP/NTP
- sFlow
- BootP/DHCP client



DGS-3620

IPv6

Будет реализовано

- VRRPv3
- BGPv4+
- PIM-DM v6
- PIM-SSM v6
- PIM-SDM v6
- IPv6 Static IP Multicast Route

DGS-3420 & DGS-3120

D-Link
Building Networks for People



IPv6 Уже реализовано



- IPv4/v6 Dual Stack
- IPv6 Tunneling
- Neighbor Discovery
- IPv6 Static Routing
- RIPng
- MLD v1/v2 Snooping
- SSH
- SSL
- IMPB
- DHCPv6 Snooping
- IPv6 ND Snooping
- ACL
- QoS
- Support IPv6 RADIUS
- WAC IPv6
- Web Management
- Telnet Server/Client
- TFTP Client
- SNMP v1/v2c/v3
- ICMP
- IPv6 Ping/Traceroute
- DHCPv6 Relay Agent
- DHCPv6 Server
- sFlow
- BootP/DHCP client



DES-3528/3552 & DES-3200

IPv6 Уже реализовано



- Support IPv6 RADIUS
- Web- based Access Control (WAC) IPv6
- Web Management
- Telnet Server/Client
- TFTP Client
- SNMP v1/v2c/v3
- ICMP
- IPv6 Ping/Traceroute
- DHCPv6 Relay Agent
- BootP/DHCP client
- IPv4/v6 Dual Stack
- Neighbor Discovery
- IPv6 Static Routing
- MLD v1/v2 Snooping
- SSH
- SSL
- IMPB
- DHCPv6 Snooping
- IPv6 ND Snooping (IMPB)
- ACL
- QoS



IPv6

Уже реализовано

- IPv4/v6 Dual Stack
- Neighbor Discovery
- IPv6 Static Routing
- Policy-based Routing
- ACL



DFL-260E/860E/1660/2560/2560G

DIR



DIR-615
Wireless N Router (H/W rev. Cx, Ex)



DIR-632
Wireless N 8-Port Router
(H/W rev. A1)



DIR-645
Whole N Gigabit Home Router



DIR-655
Xtreme N Gigabit Router (H/W rev. B1)



DIR-815
Wireless N Dual Band Router
(H/W rev. A1)



DIR-825
Xtreme N Dual Band Gigabit Router
(H/W rev. B1, C1)



DIR-857
HD Media N Dual Band Gigabit Router 3000

D-Link Router IPv6 Support

- Tunneling
 - IPv6 in IPv4 Tunneling
 - 6to4 Tunneling
 - 6rd Tunneling
 - DHCP Option for 6rd
 - Teredo passthrough
- Native Dual Stack
 - Static IPv6 and route
 - DHCPv6 / DHCPv6-PD
 - Autoconfiguration
 - IPv6 over PPP
- DS-Lite (Dual-Stack Lite)
 - DHCPv6 Option for DS-Lite
- Web IPv6 Diagnostic Tool
- Manual IPv6 Firewall
- IPv6 Static Route
- IPv6 RA Option for RDNS
- IPv6 RA Option for DNSSL
- IPv6 LLMNR and Bonjour
- DHCP-PD in LAN
- ULA Support
- IPv6 DDNS
- TR-069/TR-181i2
- Simple Security (RFC 6092)
- IPv6 UPnP Support

**С п а с и б о з а
в н и м а н и е !**

*Иван Мартынюк
D-Link Украина
Главный консультант
IMartyniuk@Dlink.ua
Тел./Факс +38 (044) 545-64-40*