

Building an IXP

ENOGI, Moscow, Russia

Andy Davidson

adavidson@he.net

7th July 2011

Hurricane Electric / LONAP

RIPE EIX-WG Co-chair

Agenda

- Before you buy a switch
- After installation, before customers
- Turn up customers!

**Before you
buy a switch**



Planning

Community



Legal Structure

A close-up photograph of a fountain pen with a silver nib and a black barrel, positioned on the right side of the frame. The pen is drawing a large, dark, hand-drawn '@' symbol on a white surface. The symbol is composed of several overlapping loops and curves. The background is a plain, light-colored surface.

Legal Entity

Commercial

Association

Define your offering

Peering LAN

**Closed User
Groups?**

**Interlink own
network?**

Transit OK?



Number Resources

LIR Portal

About The RIPE NCC

Member Support

IPv4 • IPv6 • AS Numbers • Direct Assignments

Certification • FAQs • Contact Registration Services • RIPE NCC Resource Quality Assistance

You are here: Home > LIR Services > Resource Management

Resource Management

Information to help RIPE NCC Members (LIRs) and Direct Assignment users manage Internet number resources.

IPv4 Exhaustion

With the remaining IPv4 address pool held by the Internet Assigned Numbers Authority (IANA) exhausted, what happens now?

[Read More](#)



Can I split up assignments? How and when do I request an allocation? How do I request an AS Number?

Quick Links

[Request Forms & Supporting Notes](#)

[IPv4 Evaluation Procedures](#)

[IPv4](#)

[IPv6](#)

[AS Numbers](#)

[Certification](#)

[Reverse DNS](#)

[Resource Quality](#)

[Contact Registration](#)

[Services](#)

End User Contract

No PI from last /8

Special IX v6 rules

[Get Resources Direct](#)

[Tools for LIRs](#)

[FAQs](#)

End Users can request independent resources directly

The RIPE NCC has produced a range of utilities to manage

FAQ: IPv4 Address space

Jumbo Frames

A large white jumbo jet airplane, likely an Airbus A380, is shown on a runway. The aircraft is viewed from a low angle, emphasizing its massive size. Two large engines are visible under the wings. In the foreground, a white ground support vehicle is positioned near the aircraft. The background shows a clear sky and some airport buildings.

> 1500/1522

Peering LAN / CUG

ISLs

Spanning Tree

MRP

Layer 2 Resilience Protocols

VPLS

EAPS

Flex Links

Trill
one day!

Port Security

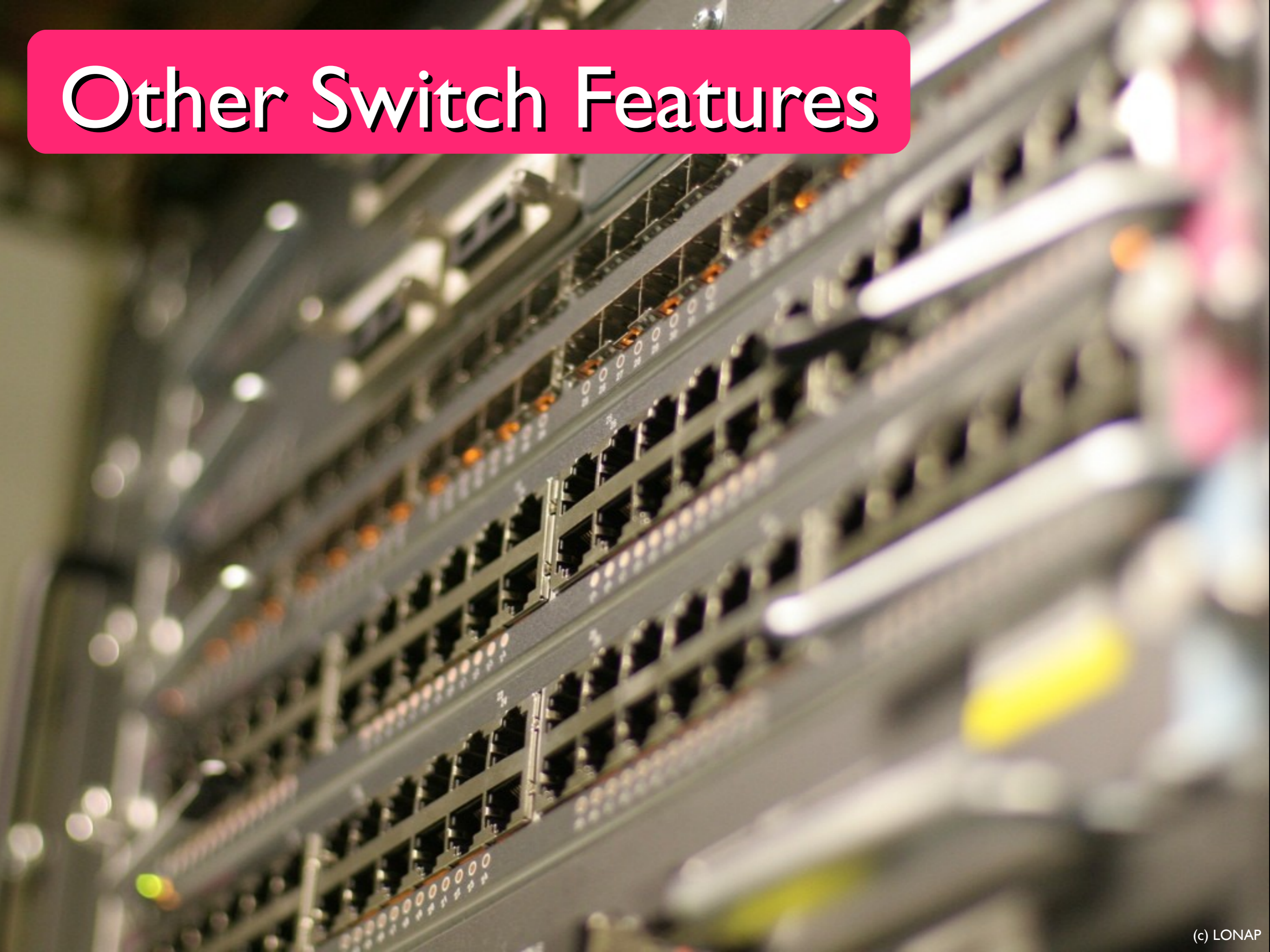


'n' MACs per port

Storm Prevention

Leaky ISP Layer 2

Other Switch Features



Colocation



Independence

Support

Partnership

Collector
(BGP Router)

Debug

Monitor

Support

**After
installation**

Monitoring

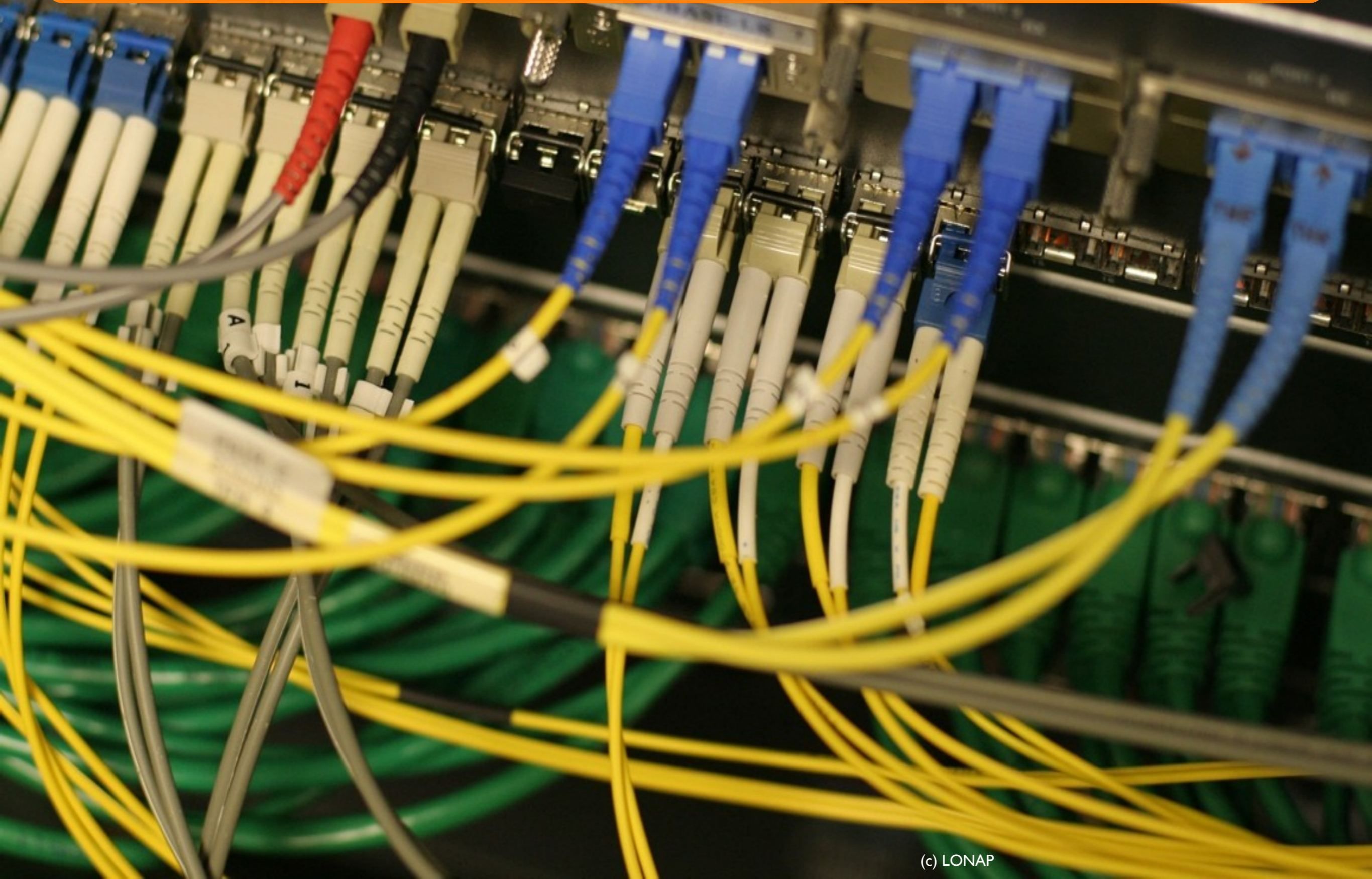
dev/ad0s1a	1000M	250M	650M	25%	/
dev/ad0s1h	79G	69G	0.00	0%	/
dev/ad0s1e	1000M	40M	0.00	0%	/
dev/ad0s1g	20G	15G	0.00	0%	/
dev/ad0s1f	7.9G	803M	6.5G	11%	/var
dev/ad2s1e	39G	32G	0.00	0%	/
dev/ad2s1f	33G	4.7G	0.00	0%	/
procfs	4.0K	4.0K	0.00	0%	/
dev/ad3s1	183G	168G	255M	100%	/vol1
dev/ad1s1	113G	102G	0.00	0%	/
girs uptime	3:31PM up 1249 days, 4:1				
girs	█				

Availability

Performance

Ethernet OAM?

Plan for a **dense** cabling environment



SFlow

Customers

Top Peers

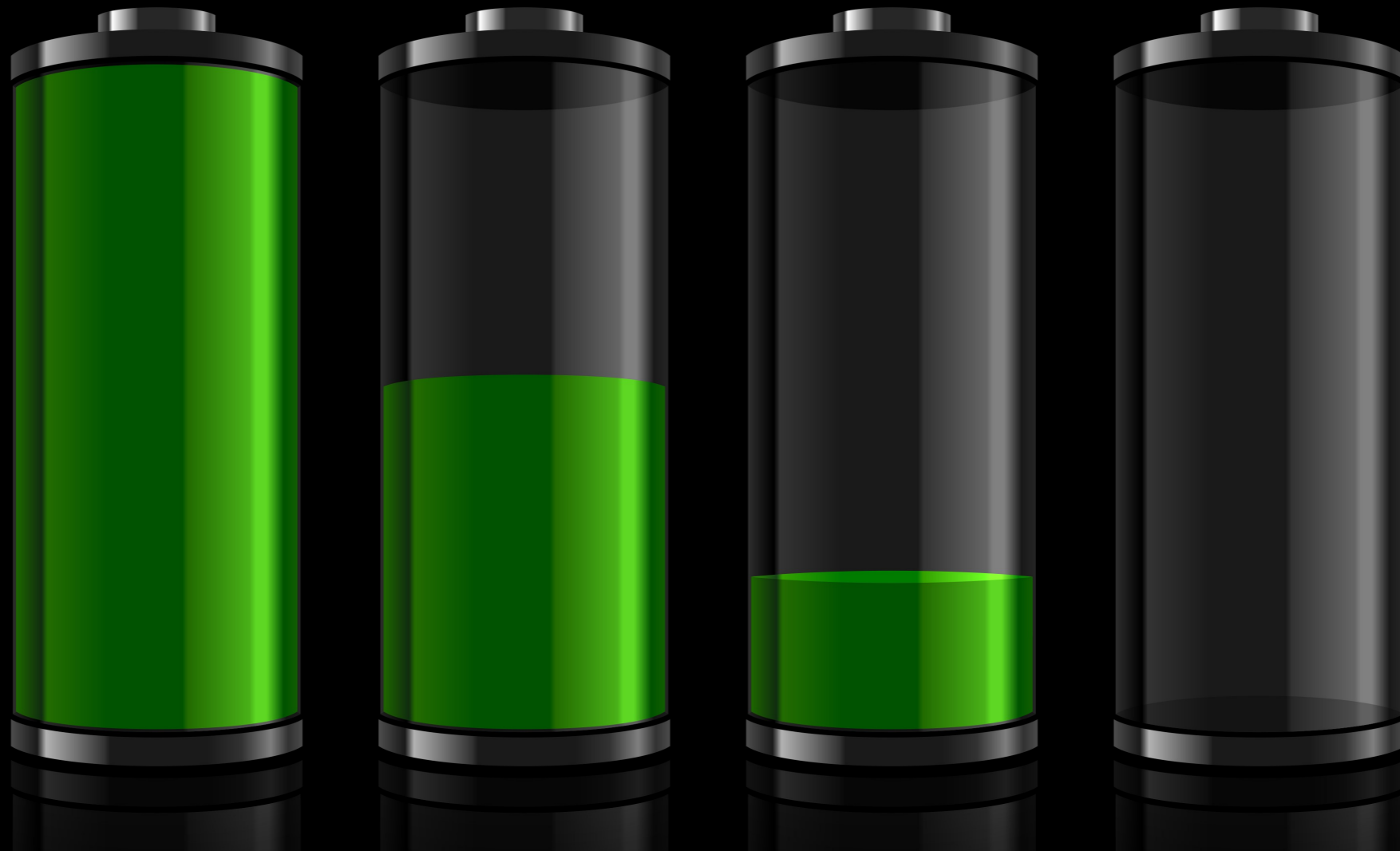
Exchange

Marketing

Resilience

Missed Ops

Service Levels



Cost to Exchange funds

Commercial v Association

Communications



Tech Support

Organisational

New Member

Operations

**Turn up
customers!**

Cabling

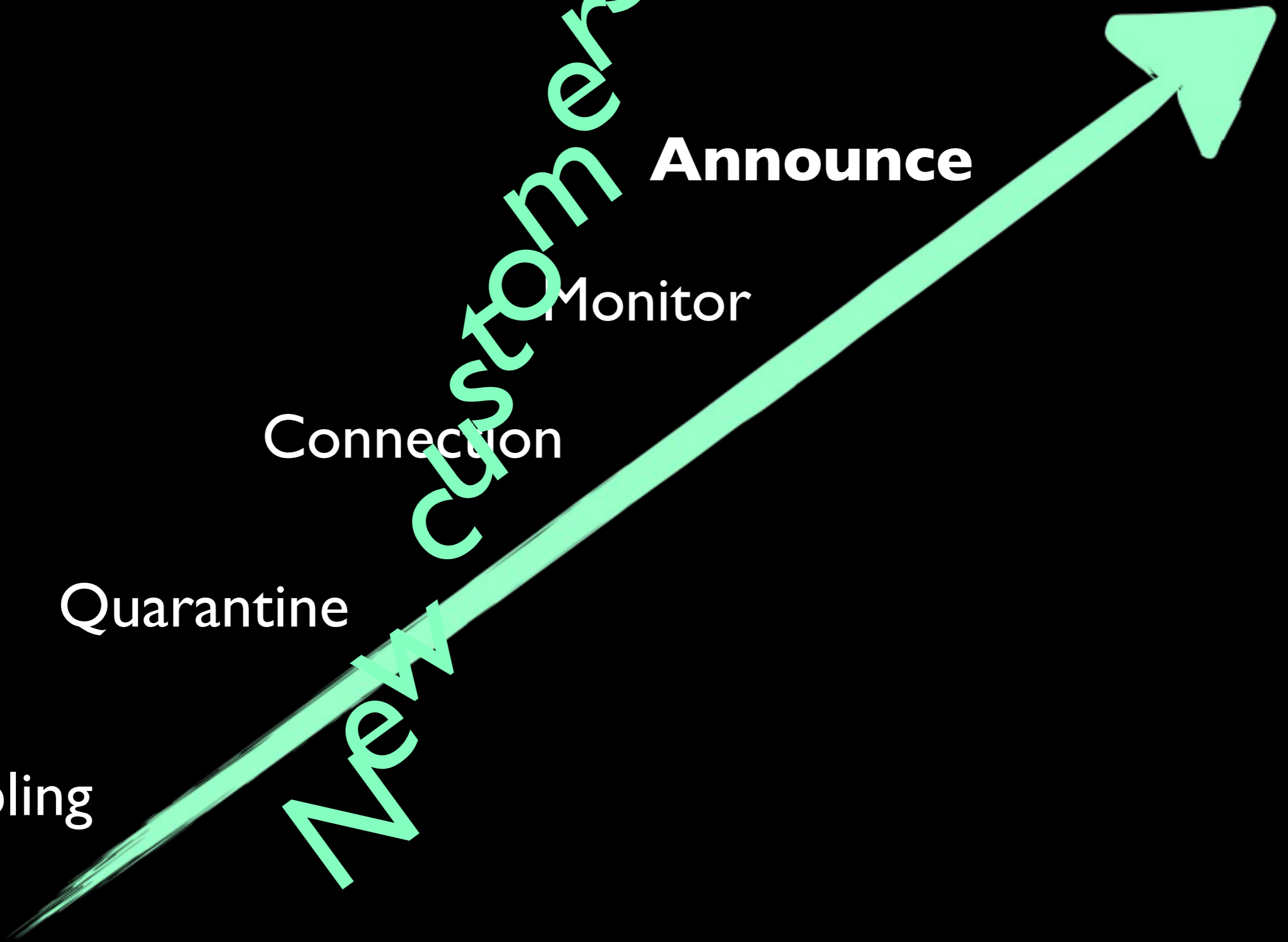
Quarantine

Connection

Monitor

Announce

New Customers!



Quarantine Process

New customers

Naughty customers

Prohibited Traffic

BGP Clue



Offer **IPv6**

From day one

Same service
level



Congestion

Member Ports

ISLs

A close-up photograph of a bright yellow, porous sponge with a highly textured, fibrous surface. The sponge is positioned diagonally across the frame, with its top-left corner towards the upper left and its bottom-right corner towards the lower right. The background is plain white.

ARP Sponge

When larger

**Limits spurious
broadcasts**

Any Questions?

adavidson@he.net

+44 114 3190605

twitter: @andyd